

## Wireless Setup for Windows XP

For assistance during the configuration process please call the Computing and Communications Help Desk at 639-2049, [avdesk@swgc.mun.ca](mailto:avdesk@swgc.mun.ca)

### Who should use this document?

This document should be used by SWGC faculty, staff, and students who would like access to the WLAN and have laptops which use the Windows XP operating system. It is provided AS IS due to Copyright and license agreements of the software contained within this distribution.

### Requirements:

- A laptop with windows XP operating system with latest service pack and patches applied.
- A wireless network card supporting IEEE 802.11g installed with the latest drivers. NOTE: Do not install the network card software, only install the drivers.
- Your wireless account is the same as your Grenfell username and password.
- **SSID or network name:** Faculty / Staff (**fac**), Students (**stu**), Guests (**guest**)
- At least 2 MB of free disk space on your hard drive.

### Configuration:

1. **Click Start> Control Panel> Network Connections** to verify that the card is detected by Windows XP. If detected you should see the following wireless icon. Note: For classic view users click **Start>Settings>Control panel> Network Connections**.

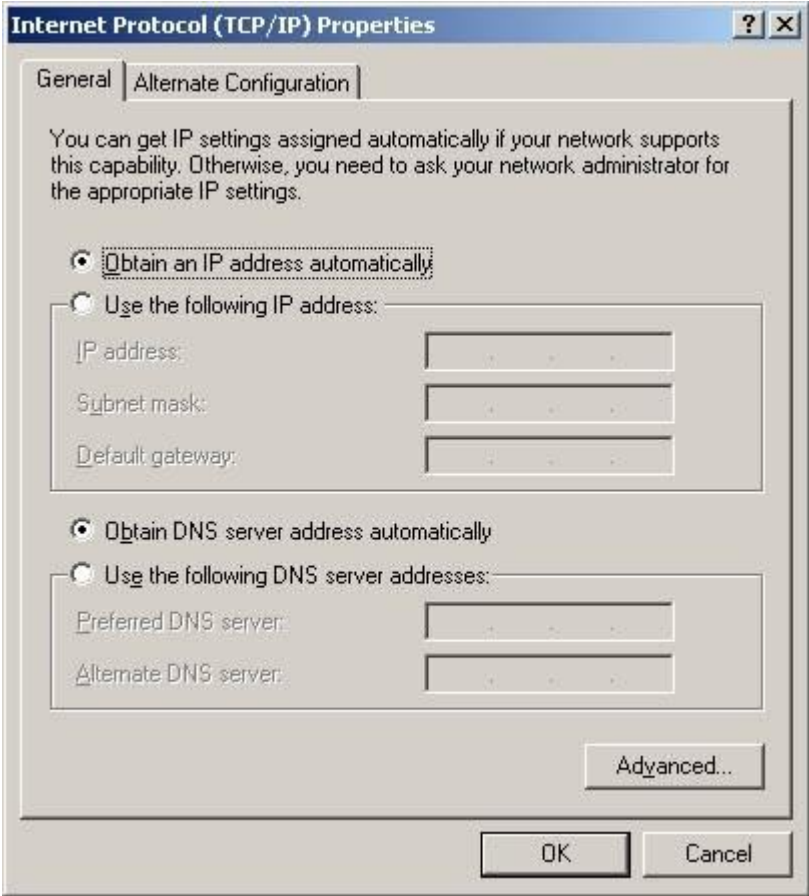


If the wireless card is not detected by Windows XP you will have to install the appropriate drivers. Please make sure they are the latest for the card in question.

Once this is complete make sure that the operating system has the latest patch available for WPA support which can be found online by referring to the Microsoft Knowledge base article KB826942, or you can try and download the patch from: <http://www.microsoft.com/downloads/details.aspx?FamilyID=5039ef4a-61e0-4c44-94f0-c25c9de0ace9&displaylang=en>.

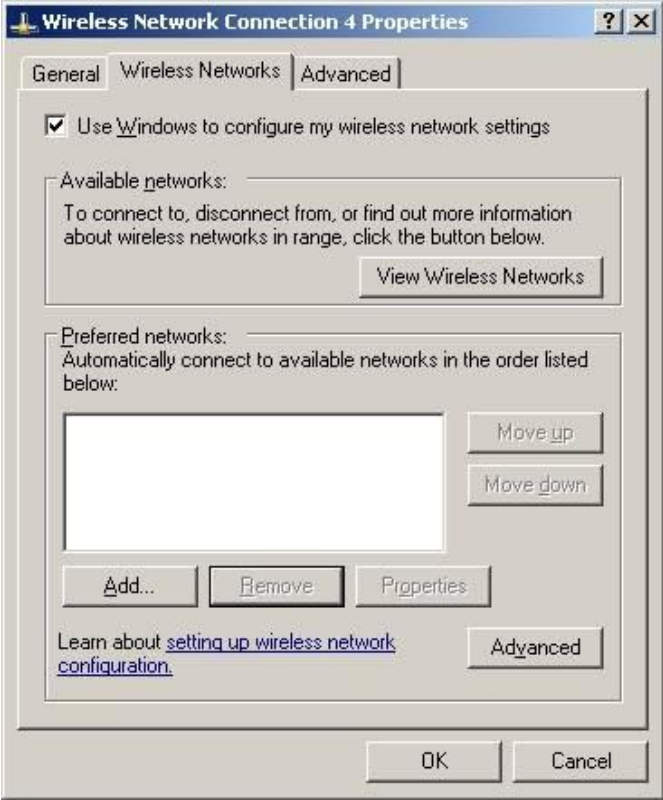
Once the laptop has the latest updates for WPA you can begin to configure the wireless network card.

- 2. Right click the **Wireless Network Connection** and select Properties.
- 3. On the **General** tab; make sure the wireless network card shows in the **Connect Using:** box.
- 4. In `This connection uses the following items' click **Internet Protocol TCP/IP**, and select **Properties**.
  - Make sure the 'Obtain an IP address automatically' along with 'Obtain DNS server address automatically' are selected.
  - Click **OK**.



5. Click the **Wireless Networks** tab\* on the **Wireless Network Connection Properties** box:

- Make sure that '**Use Windows to configure my wireless network settings**' is checked.
- On this tab you will see 'Available Networks' which may show a connection due to other signals being detected and below that you will see 'Preferred Networks'.
- Below the 'Preferred Networks' click **Add**.

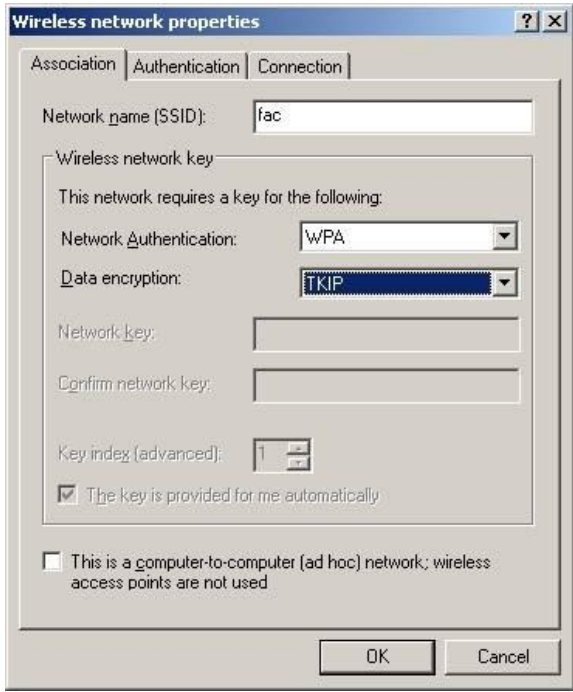


6. Click on the **Association** tab within Wireless network properties:

For Network Name (SSID): type: **stu, fac, or guest** (see [requirements](#) at the beginning of this document).

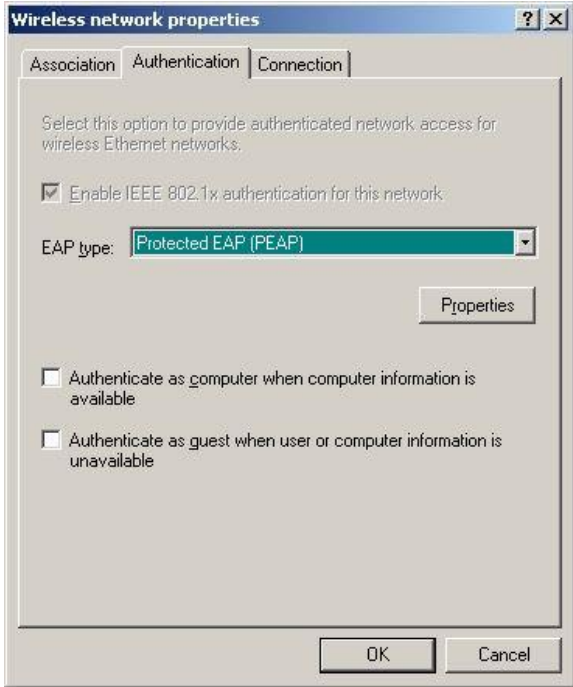
- Network Authentication: WPA
- Data Encryption: "TKIP"

**\* Note:**  
If the Wireless Networks Tab is not visible, follow the instructions at the end of this document called "Enabling Windows to Configure Wireless Network Settings"

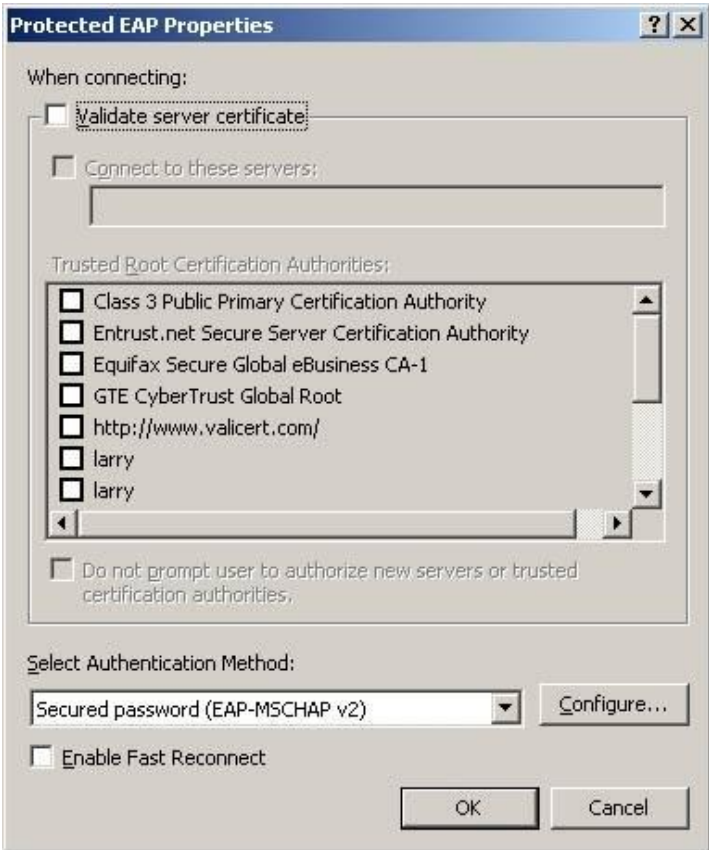


7. Click the **Authentication** tab within Wireless network properties:

- If WPA was selected in step 6, make sure the 'Enable IEEE 802.1x authentication for this network' is greyed out; otherwise `Enable IEEE 802.1x for this network' should be checked.
- Make sure for EAP type: Protected EAP (PEAP) is selected in the drop down menu. Also verify that '**Authenticate as computer when computer information is available**' is unchecked.
- Click the **properties** button



- 8. **Uncheck Validate server certificate box (Very Important)**
- 9. Verify that **Secured password (EAP-MSCHAP v2)** is selected under **Select Authentication Method**.
- 10. Click the **configure** button to the right.

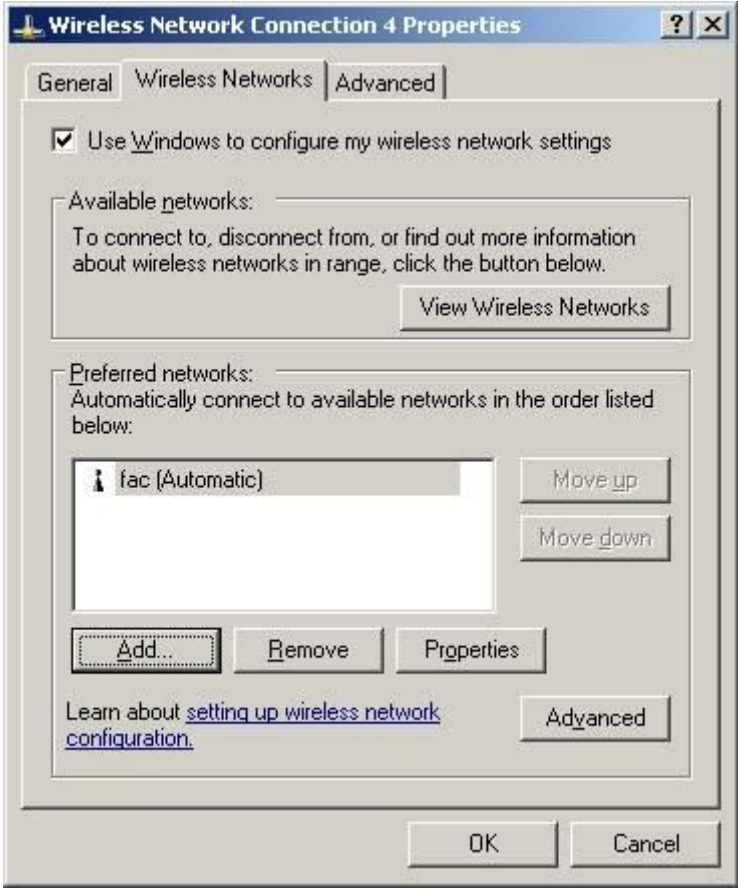


11. This opens the EAP-MSCHAP v2 properties box.

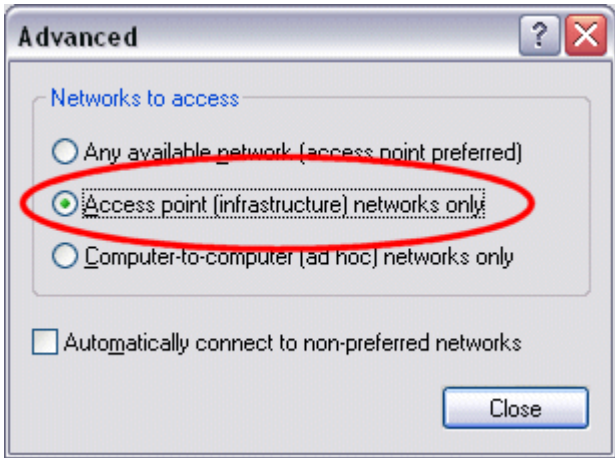


Uncheck '**Automatically use my Windows logon name and password (and domain if any)**'.

12. Now that the client is configured you can click **OK** to close the open windows until you get to the **'Wireless Connection Properties'**.



13. Click on the **Advanced** button near the bottom right corner. Make sure **Computer-to-computer (ad hoc) networks only** is **NOT** selected. Select **Access point (infrastructure) networks only**. Click **Close**.



14. Click **OK** and you will see an icon at the bottom right of your computer (two computers joined). Double click this icon and you will be prompted for your password.



15. When you click this you will be prompted for a logon. Enter your **Grenfell username and password** and use **SWGC** as the Logon domain.



16. You should now see "wireless network connection authentication succeeded".

If this does not work try the following: Right-click the newly configured wireless connection and disable it. Then enable it again.

**Note:** This logon will authenticate you to the SWGC/MUN wireless network. Once authenticated Windows XP should remember the logon credentials and you should not be prompted for authentication again unless the wireless connection is removed.

## Common Issues

### *Enabling Windows to Configure Wireless Network Settings*

1. Right-click on **My Computer**
2. Select **Manage**
3. Expand the **Services and Applications** view and click on **Services**
4. Find the **Wireless Zero Configuration** service and double-click on it to **open**
5. Click **Start** to start the service
6. The Windows Wireless Tab should now be located in the Wireless Network Configuration Properties box..