

Wireless Setup for Windows Vista

For assistance during the configuration process please call the Computing and Communications Help Desk at 639-2049, avdesk@swgc.mun.ca

Who should use this document?

This document should be used by MUN faculty, staff, and students who would like access to the WLAN and have laptops and desktops which use the Windows Vista operating system. It is provided AS IS due to copyright and license agreements of the software contained within this distribution.

Requirements:

- A laptop with Windows Vista operating system with latest service pack and patches applied.
- A wireless network card supporting IEEE 802.11g installed with the latest drivers. NOTE: Do not install the network card software, only install the drivers.
- Your wireless account is the same as your Grenfell username and password.
- **SSID or network name:** Faculty / Staff (**fac**), Students (**stu**), Guests (**guest**)
- At least 2 MB of free disk space on your hard drive.

Configuration:

1. Click **Start | Control Panel**



2. Click **“Network and Sharing Center”**, the icon that appears as four small blue screens:



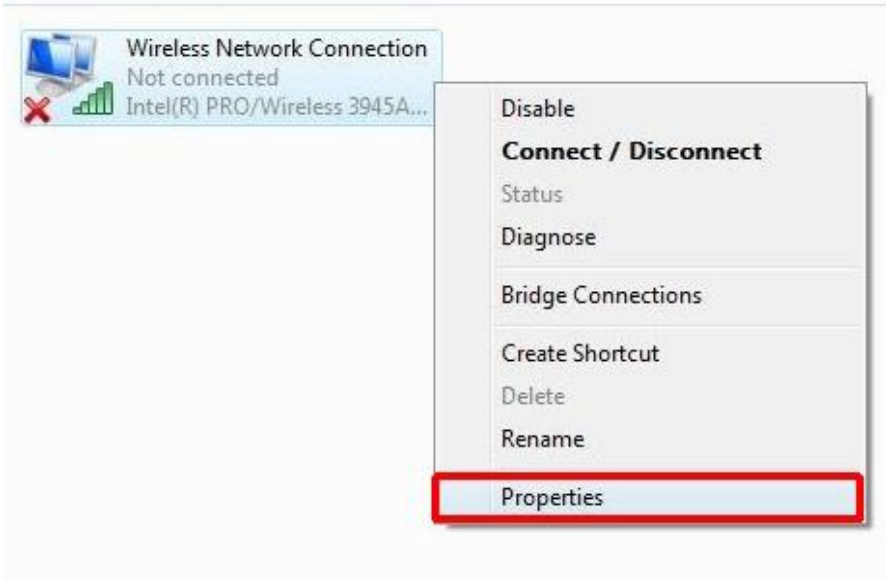
3. Click **“Manage network connections”** in the left-hand sidebar



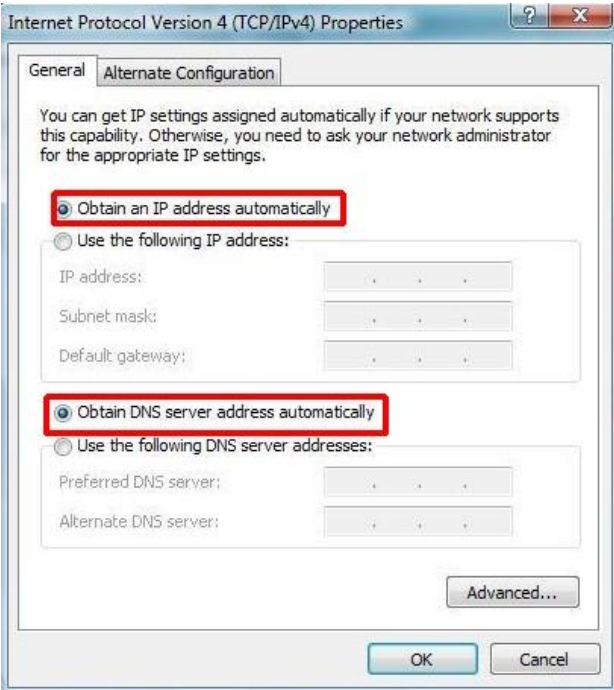
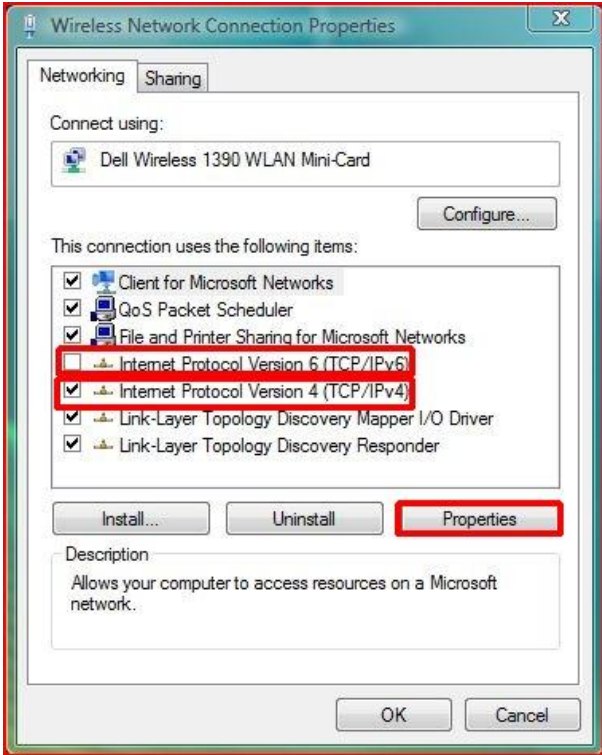
- 4. Verify that the wireless card is detected by Windows Vista. If detected you should see a wireless network connection icon similar to the picture below. If the wireless card is not detected by Windows Vista you will have to install the appropriate drivers. Please make sure they are the latest for the card in question.



- 5. Right-Click the **Wireless Network Connection** icon and select **Properties**, and continue to the Wireless Network Connection Properties window.



6. Under 'This connection uses the following items:' UNCHECK: 'Internet protocol Version 6 (TCP/IPv6)'. Then select 'Internet protocol Version 4 (TCP/IPv4)' and click **properties**; you should see two windows that look similar to the following:



- 7. Make sure the '**Obtain an IP address automatically**' along with '**Obtain DNS server address automatically**' are selected. Click **OK** and **Close**. Close the Network Connections window and return to the Network and Sharing Center.
- 8. Click "**Manage wireless networks**" from the sidebar



- 9. Click Add in the "**Manage wireless networks window**" and you should see a window similar to the following:

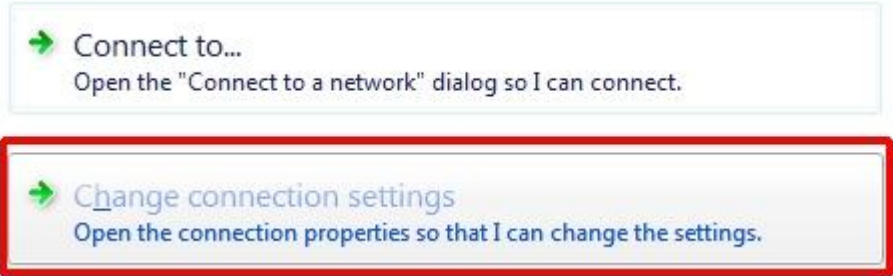


- 10. Click "**Manually create a network profile**", and enter the **Network name**, **Security type** as WPA-Enterprise, **Encryption type** as TKIP, and select "**Start this connection automatically**" and "**Connect even if the network is not broadcasting**" so that the window looks similar to the following window.

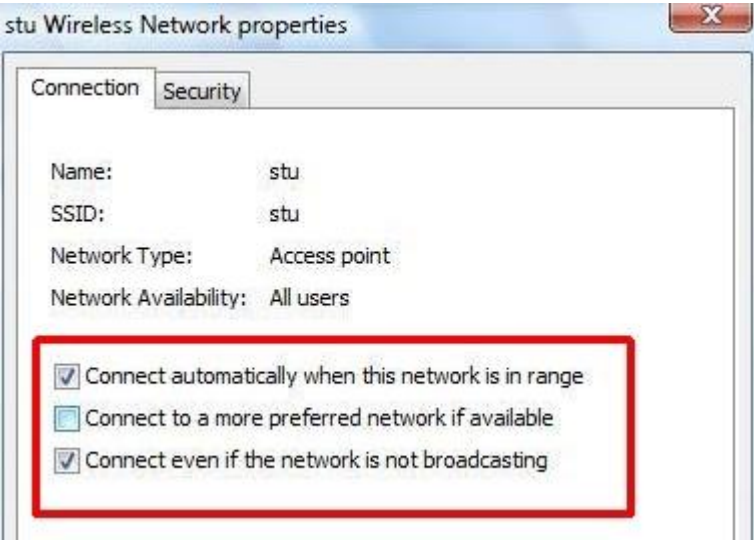
Please Note: See [requirements](#) above for the SSID or network name.



11. Click Next, and click **"Change connection settings."**



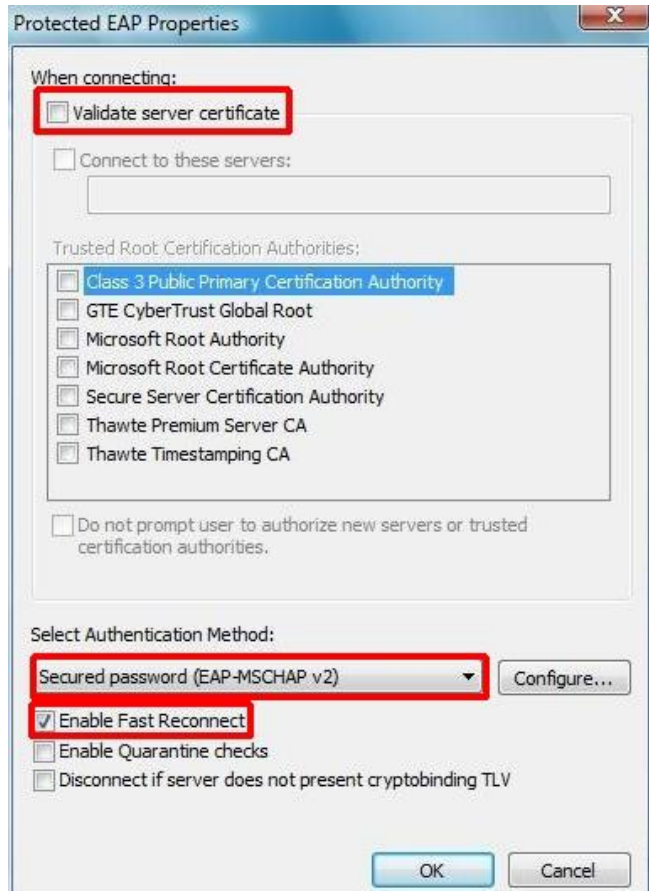
12. Under Connection tab make sure the SSID is correct (see [requirements](#) above), set to **"Connect automatically when this network is in range"**, uncheck **"Connect to a more preferred network if available"**, and check **"Connect even if the network is not broadcasting."** The window should appear similar to the following:



- 13. Under Security tab select "Security type: WPA-Enterprise", "Encryption type: TKIP", "Choose a network authentication method: Protected EAP: (PEAP)", check mark in "Cache user information for subsequent connections to this network" and click Settings. The window should look similar to the following:



- 14. Uncheck "Validate server certificate", "Select Authentication Method: Secured password (EAP-MSCHAP v2)", check "Enable Fast Reconnect". The window should look similar to the following:



- 15. Click **Configure.** In the **EAP MSCHAPv2 Properties** window, uncheck **When connecting: Automatically use my Windows logon name and password (and domain if any)**. The window should look similar to the following:



- 16. Click **OK** to the three windows to get back to the "Manually connect to a wireless network" window. Wait a moment, and when it appears, click the balloon called **Additional information is required to connect to...**



17. Enter your **Grenfell username and password** and use **SWGC** as the Logon domain. Click OK.



Note: This logon will authenticate you to the SWGC/MUN wireless network. Once authenticated Windows Vista should remember the logon credentials and you should not be prompted for authentication again unless the wireless connection is removed.