

Wireless Setup for Mac OS X 10.3.x and 10.4.x

For assistance during the configuration process please call the Computing and Communications Help Desk at 639-2049, e-mail: avdesk@swgc.mun.ca

Who should use this document?

This document should be used by SWGC faculty, staff, and students who would like access to the WLAN and have laptops which use MAC OS X. It is provided AS IS due to Copyright and license agreements of the software contained within this distribution.

Requirements:

- Mac OS X 10.3.x (Panther)
- Airport 3.4
- Airport Extreme card (802.11g)
- Your wireless account is the same as your Grenfell username (entered as swgc\- **SSID or network name:** Faculty / Staff (**fac**), Students (**stu**), Guests (**guest**)

Configuration:

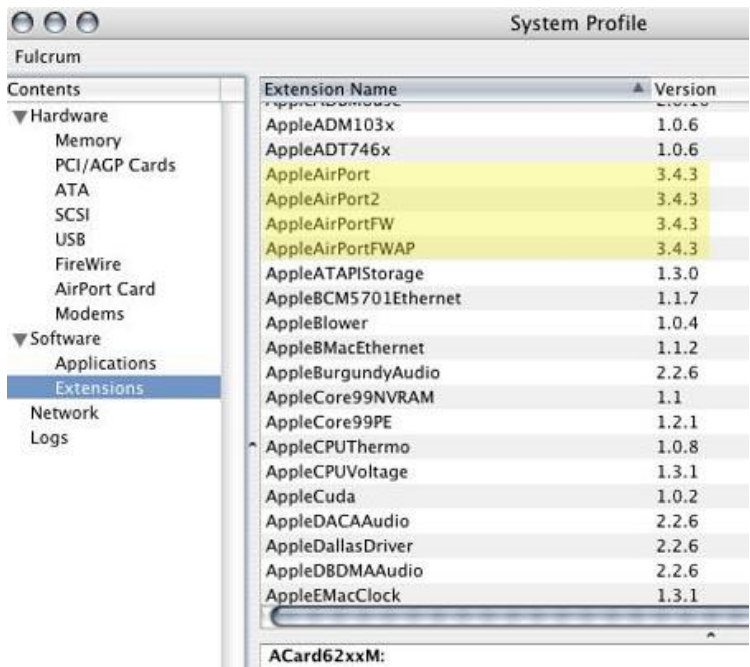
1. To check your system requirements, go under the Apple menu and choose **About This Mac**



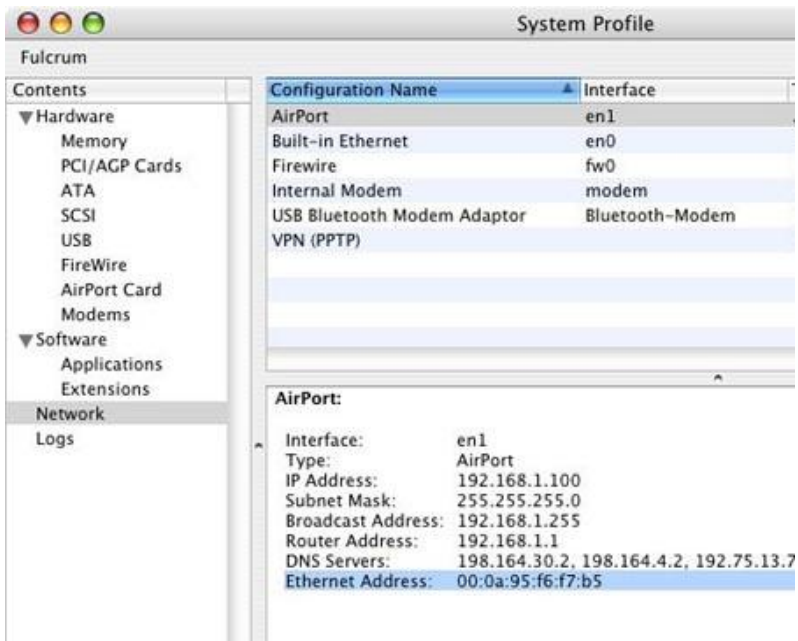
2. A box will pop up showing the Mac OS version running on your Mac.



- To check your Airport software version, click the **More Info** button, which will open the System Profile window (as shown below). Click the **Extensions** section in the left hand pane of this window. In the right hand pane, scroll down until you see **AppleAirPort**, the version numbers should be 3.4 or better (if you have run Software update recently, you should be up to date).



- To find out your Ethernet Address, click the **Network** section in the left hand pane and highlight the **Airport** section in the right pane. The Ethernet Address should be displayed as shown below.



- 5. Once you have your wireless account info, click the **Airport** menu and choose **Open Internet Connect**



- 6. Once the **Internet Connect** window is open, choose **802.1x**



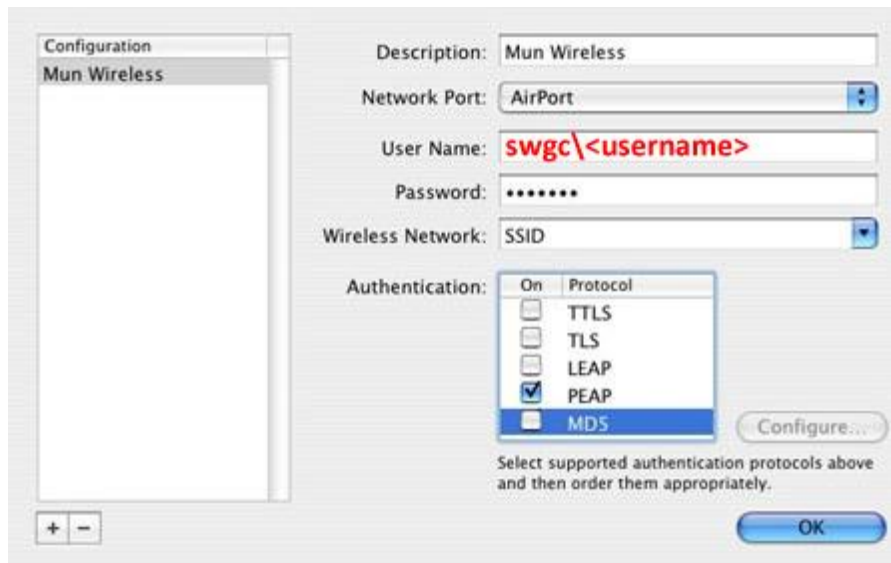
- 7. If this option is not on the tool bar, choose **New 802.1x Connection** from the file menu.



8. In the 802.1x window, click the **Configuration** popup menu and choose **Edit Configurations**



9. Enter your **Grenfell username** as **swgc\<username>** and **password**; your SSID goes in the **Wireless Network** section (see [requirements](#) above). Also de-select all protocols except PEAP in the **Authentication** section.



10. Once you are back at the 802.1x window, you should be able to hit the **Connect** button.



11. The first time you connect, you may see a sheet pop down asking you to accept a certificate. If this happens, click **Accept All** and it will go away forever. Once you have connected once, it should connect automatically in the future. You do not have to keep Internet Connect running.

12. Open the System Preferences. Select Sharing.



13. Click on the Internet button. Verify the **Built-in Ethernet** section of **Share your connection from:** to be sure the port options are **NOT** checked. If **Internet Sharing** is **ON**, click the **Stop** button to turn it off. Turning Internet Sharing off will NOT affect File sharing such as Rendezvous.

