

WIRELESS SETUP FOR WINDOWS 7

For assistance during the configuration process please call the Computing and Communications Help Desk at 639-2049, avdesk@swgc.mun.ca

Who should use this document?

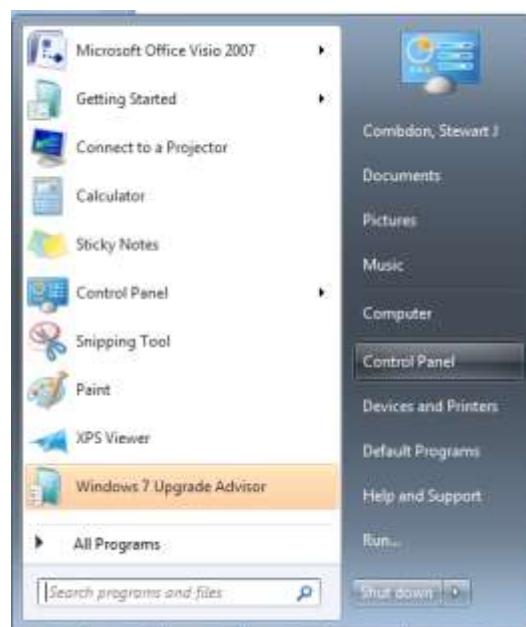
This document should be used by SWGC faculty, staff, and students who would like access to the WLAN and have laptops and desktops which use the Windows 7 operating system. It is provided AS IS due to copyright and license agreements of the software contained within this distribution.

Requirements:

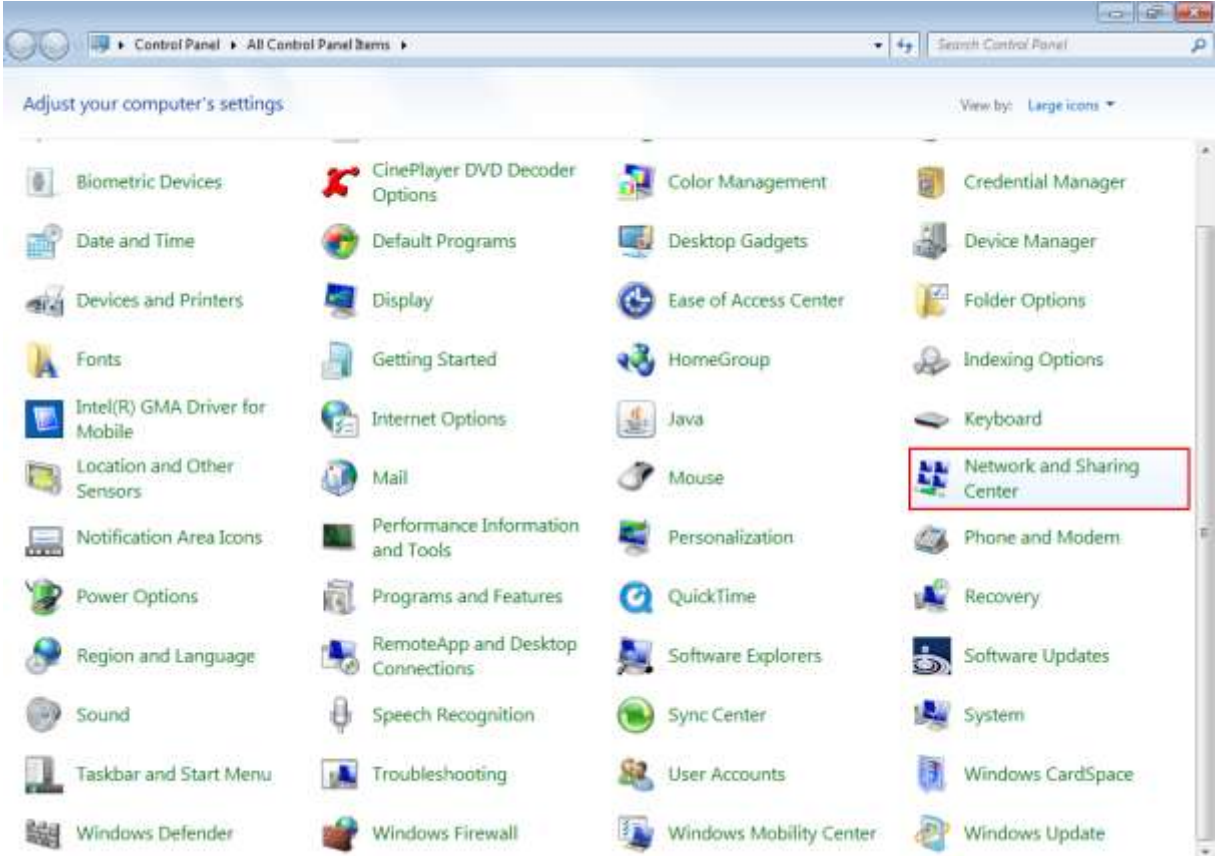
- A laptop with Windows 7 operating system with latest service pack and patches applied.
- A wireless network card supporting IEEE 802.11g installed with the latest drivers. NOTE: Do not install the network card software, only install the drivers.
- Your wireless account is the same as your Grenfell username and password.
- **SSID or network name:** Faculty / Staff (**fac**), Students (**stu**), Guests (**guest**)
- At least 2 MB of free disk space on your hard drive.

Configuration:

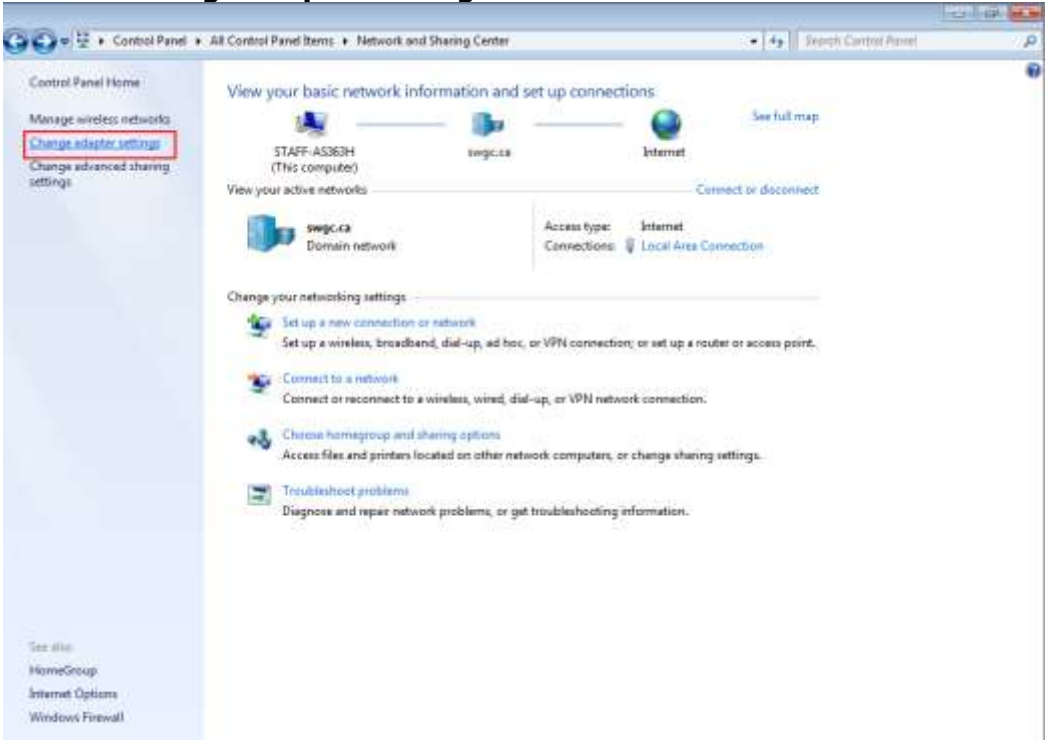
1. Click **Start | Control Panel**



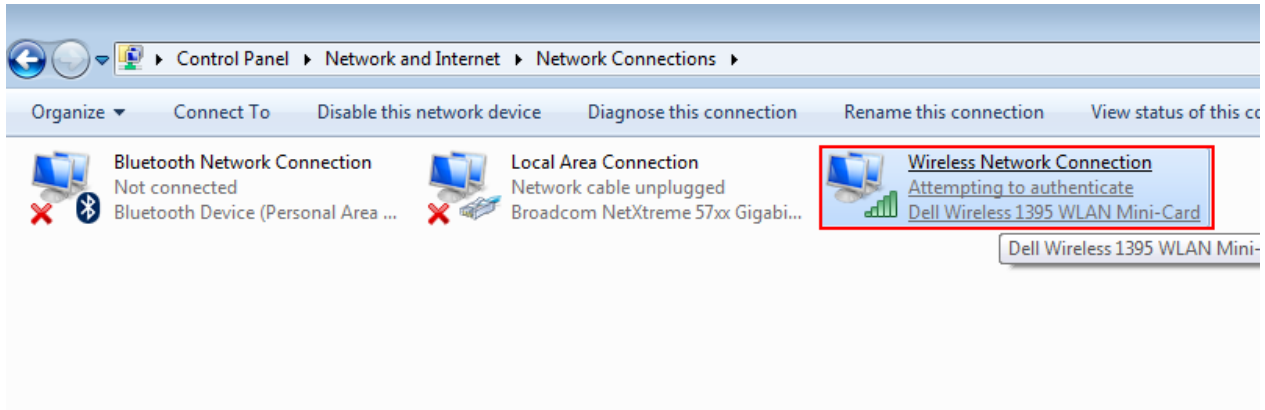
2. Click "Network and Sharing Center", the icon that appears as four small blue screens:



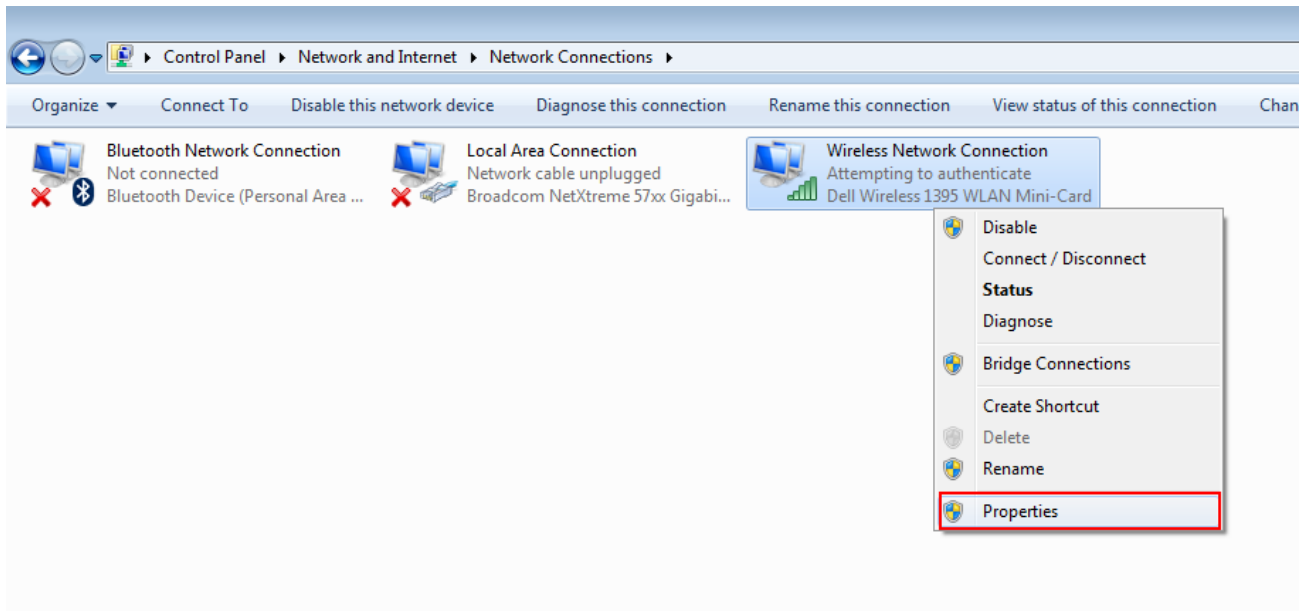
3. Click "Change Adapter settings" in the left-hand sidebar



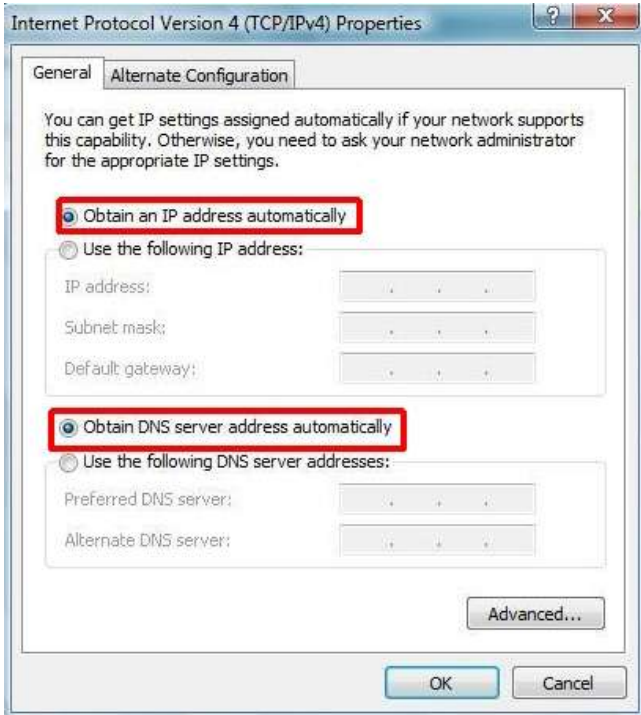
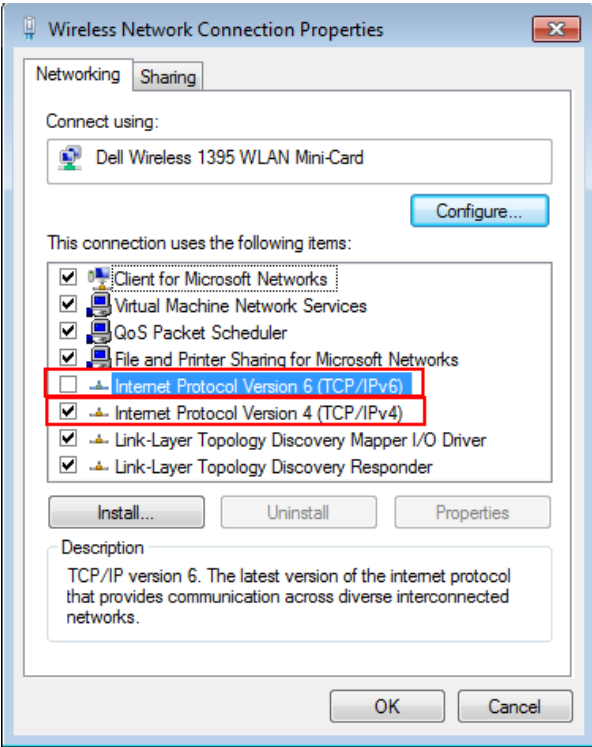
4. Verify that the wireless card is detected by Windows 7. If detected you should see a wireless network connection icon similar to the picture below. If the wireless card is not detected by Windows 7 you will have to install the appropriate drivers. Please make sure they are the latest for the card in question.



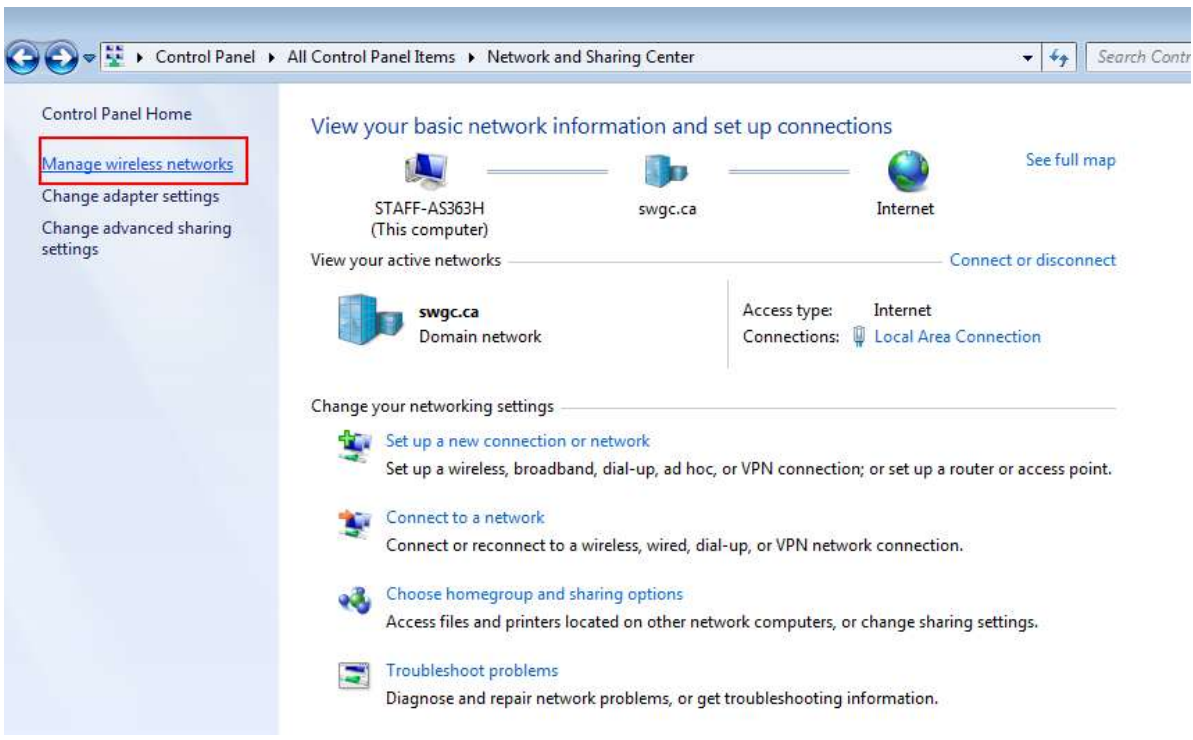
5. Right-Click the **Wireless Network Connection** icon and select **Properties**, and continue to the Wireless Network Connection Properties window.



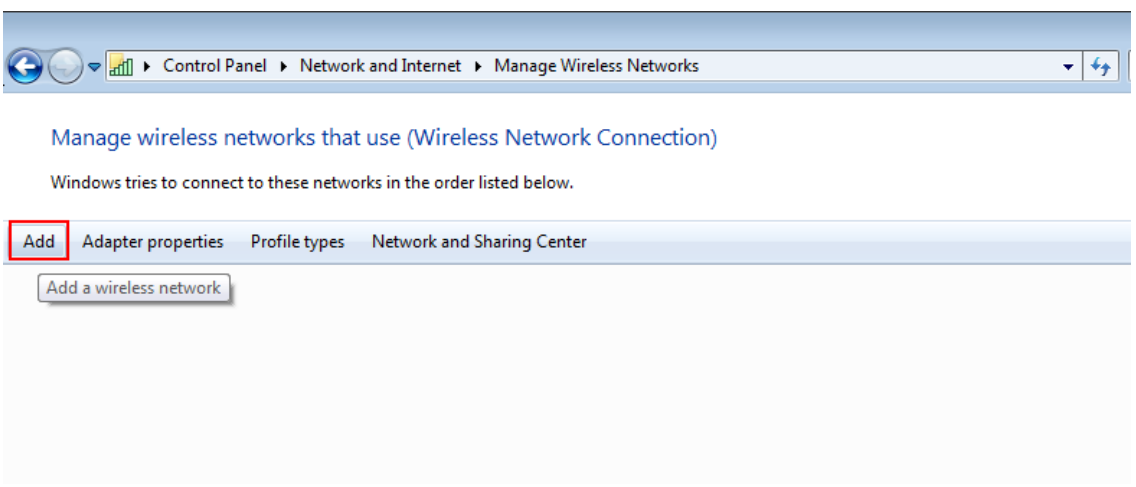
6. Under 'This connection uses the following items:' UNCHECK: 'Internet protocol Version 6 (TCP/IPv6)'. Then select 'Internet protocol Version 4 (TCP/IPv4)' and click **properties**; you should see two windows that look similar to the following:



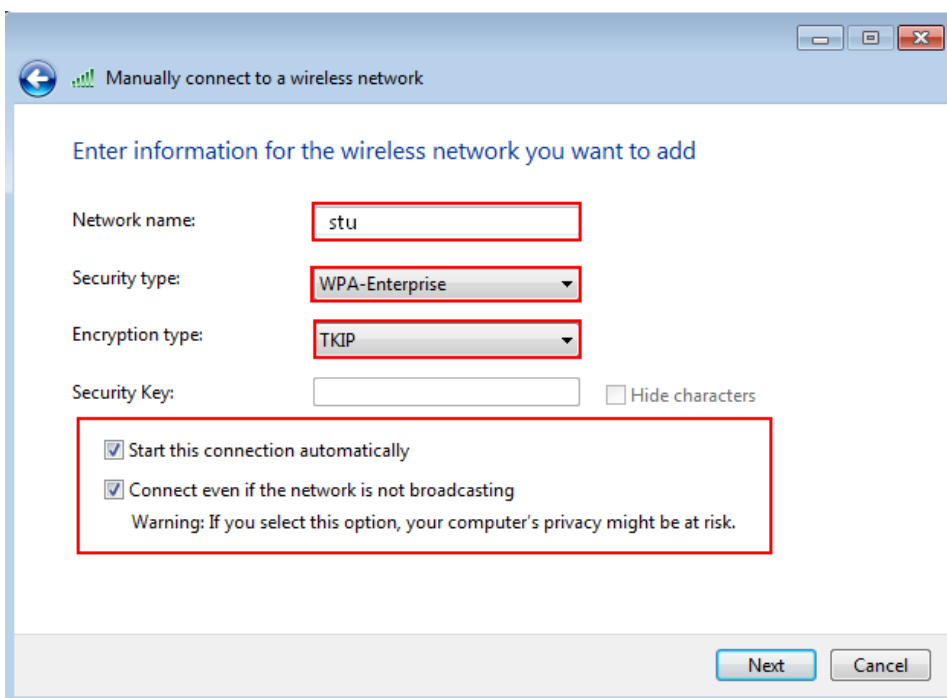
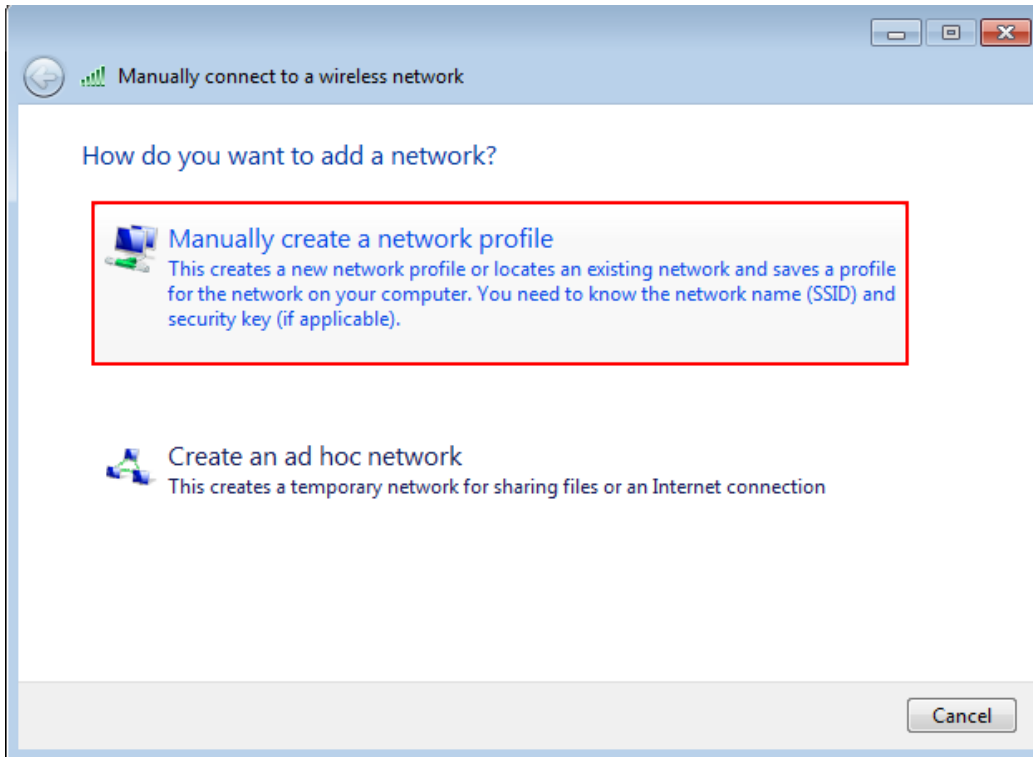
- 7. Make sure the '**Obtain an IP address automatically**' along with '**Obtain DNS server address automatically**' are selected. Click **OK** and **hit the back arrow**.
- 8. Click "**Manage wireless networks**" from the sidebar



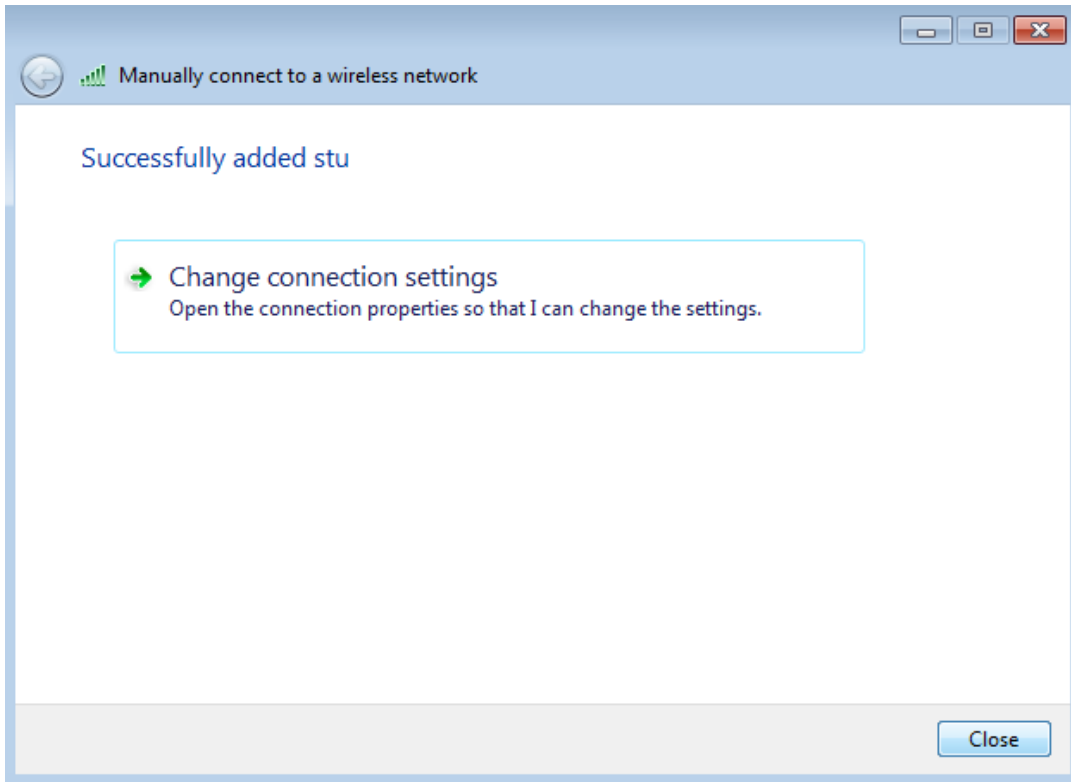
- 9. Click Add in the "**Manage wireless networks window**" and you should see a window similar to the following:



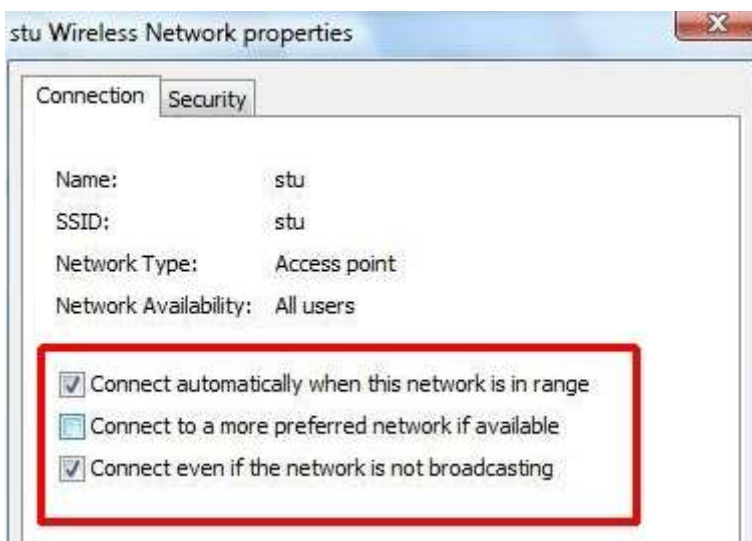
- Click "**Manually create a network profile**", and enter the **Network name**, **Security type** as WPA-Enterprise, **Encryption type** as TKIP, and select "**Start this connection automatically**" and "**Connect even if the network is not broadcasting**" so that the window looks similar to the following window.



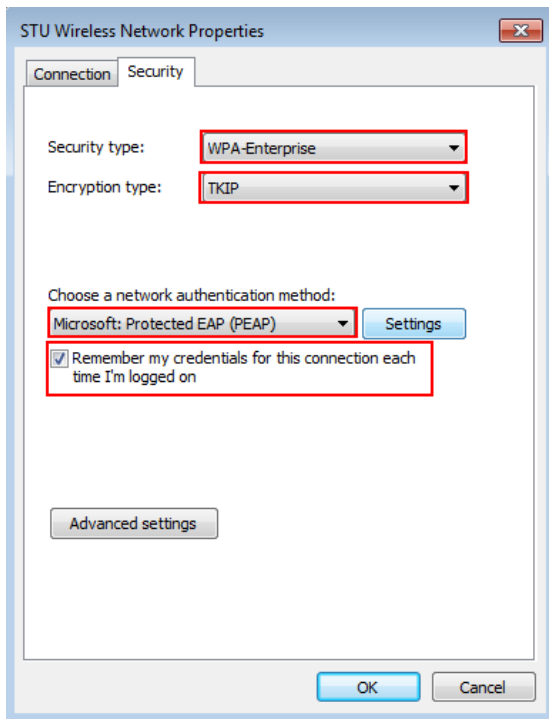
11. Click Next, and click "**Change connection settings.**"



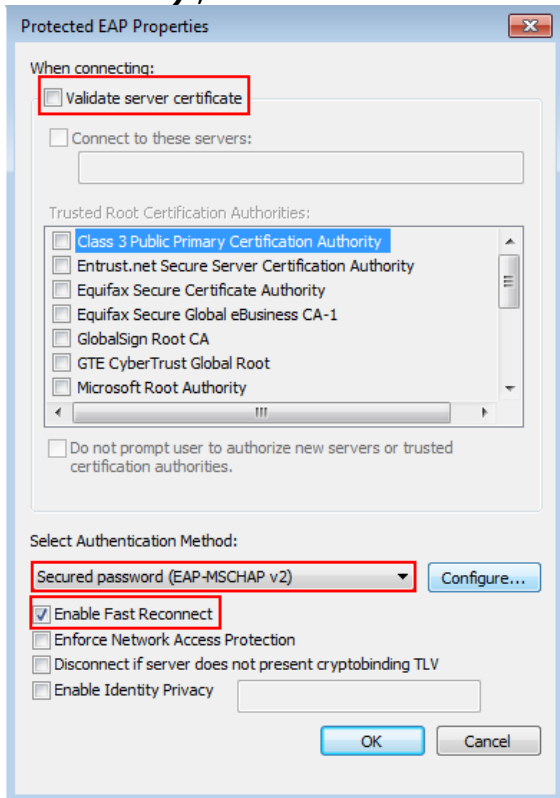
12. Under Connection tab make sure the SSID is correct (see [requirements](#) above), set to "**Connect automatically when this network is in range**", uncheck "**Connect to a more preferred network if available**", and check "**Connect even if the network is not broadcasting.**" The window should appear similar to the following:



13. Under Security tab select "**Security type: WPA-Enterprise**", "**Encryption type: TKIP**", "**Choose a network authentication method: Protected EAP: (PEAP)**", check mark in "**Cache user information for subsequent connections to this network**" and click **Settings**. The window should look similar to the following:



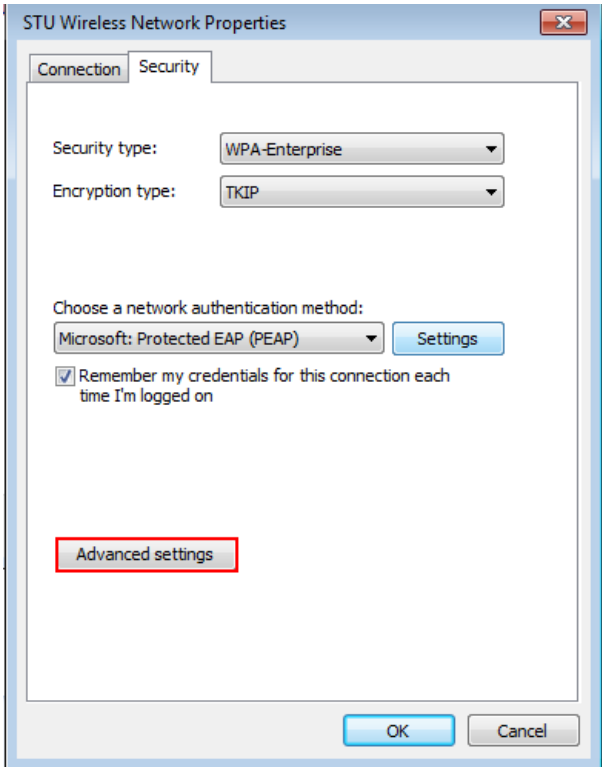
14. Uncheck **"Validate server certificate"**, **"Select Authentication Method: Secured password (EAP-MSCHAP v2)"**, check **"Enable Fast Reconnect"**. The window should look similar to the following:



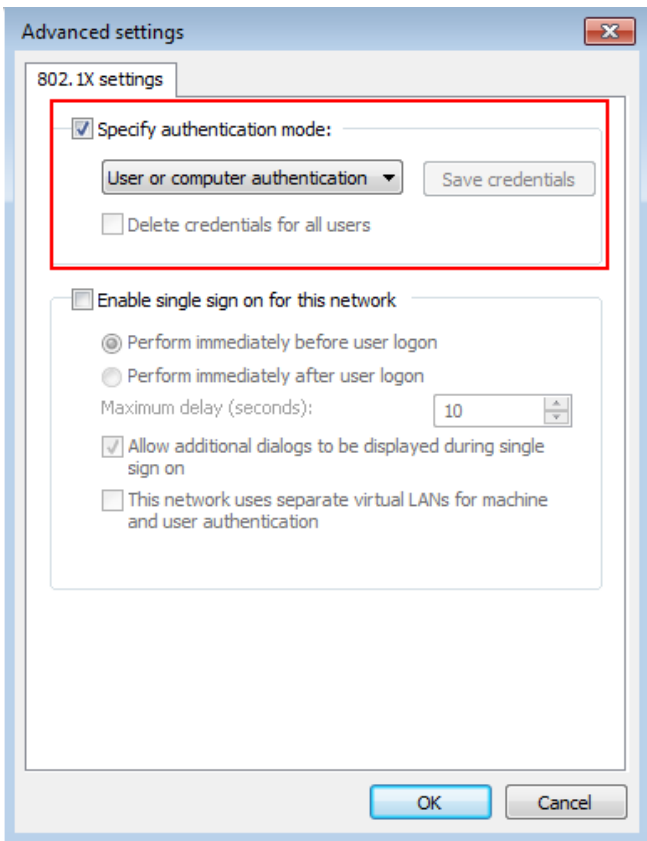
15. Click **"Configure."** In the **"EAP MSCHAPv2 Properties"** window, uncheck **"When connecting: Automatically use my Windows logon name and password (and domain if any)"**. The window should look similar to the following:



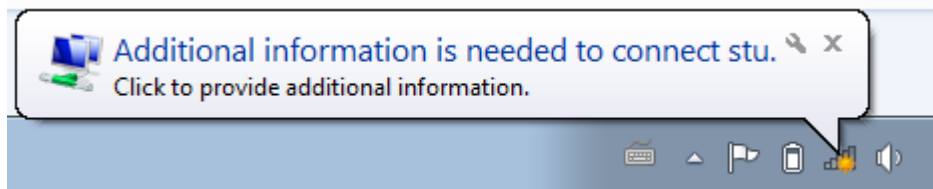
16. Click **OK** to the two windows to get back to the **Security** tab



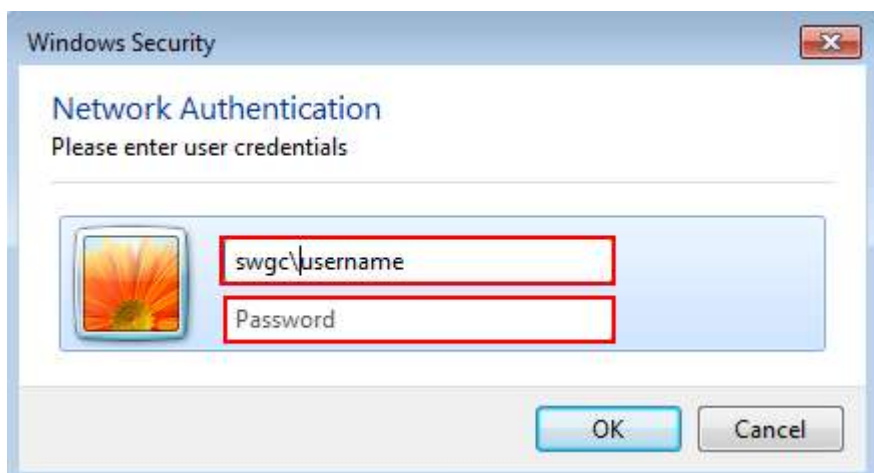
17. Click on Advanced settings and make sure that on the 802.1X tab **Specify the authentication mode** is checked and **User or computer authentication** is selected.



16. Click **OK** to the two windows to get back to the "Manually connect to a wireless network" window, then close. Wait a moment, and when it appears, click the balloon called "**Additional information is required to connect to...**"



17. Enter `swgc\username` where **username** is your **Grenfell** username which you use to log into computers on campus and your password. Click OK.



Note: This logon will authenticate you to the SWGC/MUN wireless network. Once authenticated Windows 7 should remember the logon credentials and you should not be prompted for authentication again unless the wireless connection is removed.