

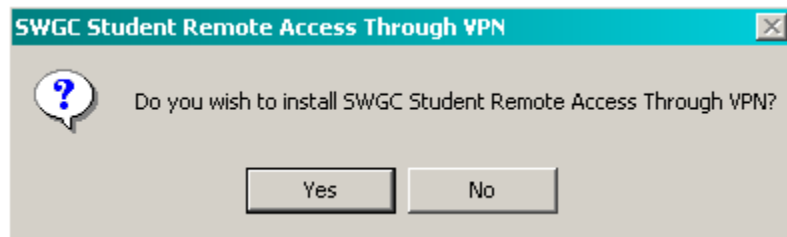
SWGVC VPN Instruction Sheet

The following instructions explain how to connect to the SWGC VPN. If you have any problems please contact the Help Desk at 639-2049.

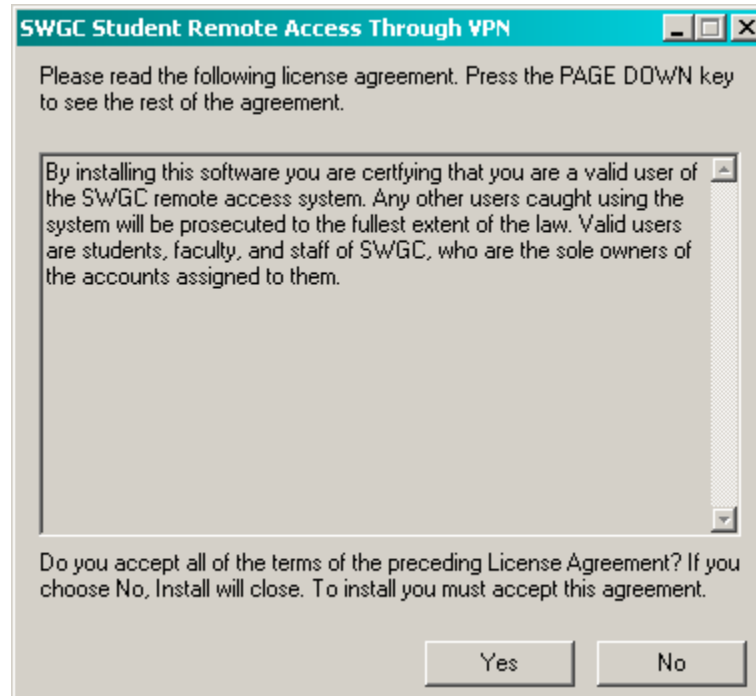
To successfully connect from home you must have ADSL or a Cable Modem properly configured.

The remaining screen shots explain how to install your SWGC VPN connection.

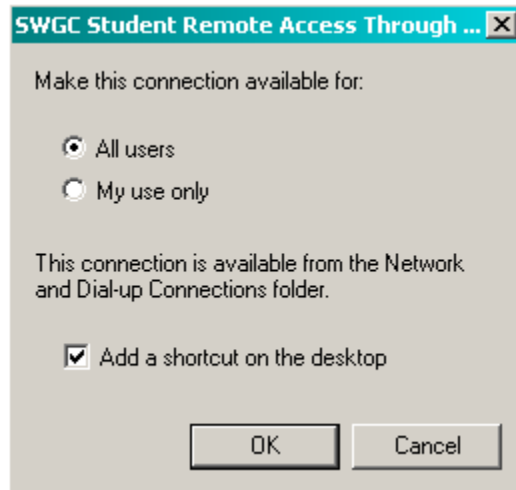
1. Download the appropriate SWGC VPN executable file.
 - **Faculty/Staff**
 - **Student**
2. Double-click on the executable file.
3. Select **Yes** in the first screen that appears.



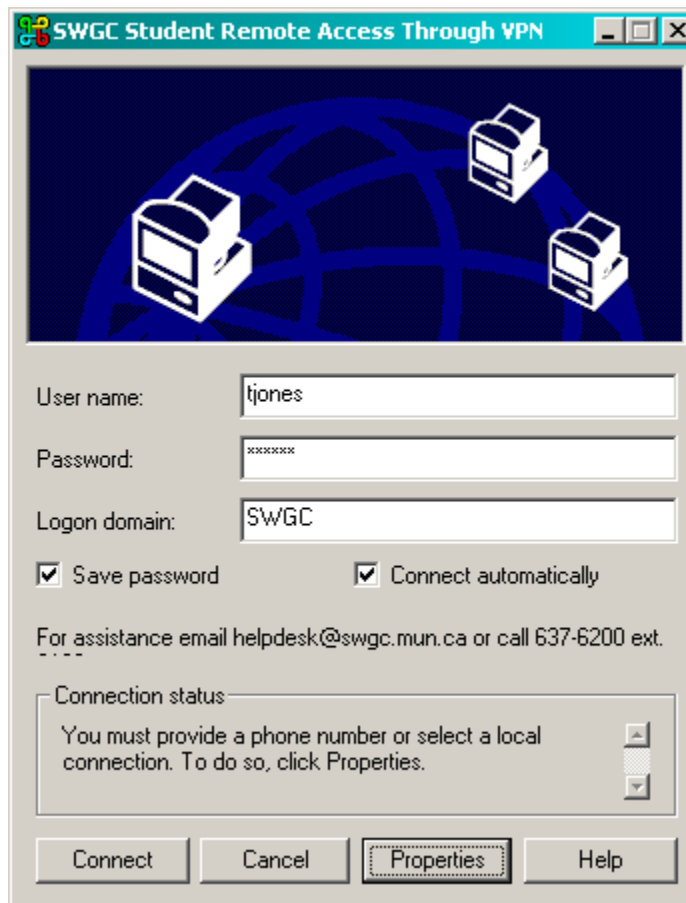
4. Select **Yes** to accept the license agreement.



5. Select the **All users** option button and select **OK**.



- 6. In the **User name** field type: **<your SWGC Network user name>**
- 7. In the **Password** field type: **<your SWGC Network password>**
- 8. In the **Logon domain** field type: **SWGC**
- 9. Select **Properties**



- 10. Select the **I am already connected to the Internet** option button. Select **OK**.
- 11. Click on the **Connect** button to start the connection process.

12. If you want to map a drive to your P drive please go to
Start | Programs | Windows Explorer

Select **Tools** from the top menu.

Select **Map Network Drive**.

Select **P** for the drive letter.

Type the following:

Students: [\\curly.swgc.ca\users\\$username](\\curly.swgc.ca\users$username) (where username is your computing account username.)

Faculty: [\\swgcfaculty.swgc.ca\users\\$username](\\swgcfaculty.swgc.ca\users$username) (where username is your computing account username.)

Staff: [\\swgcstaff.swgc.ca\users\\$username](\\swgcstaff.swgc.ca\users$username) (where username is your computing account username).

Select **Finish**