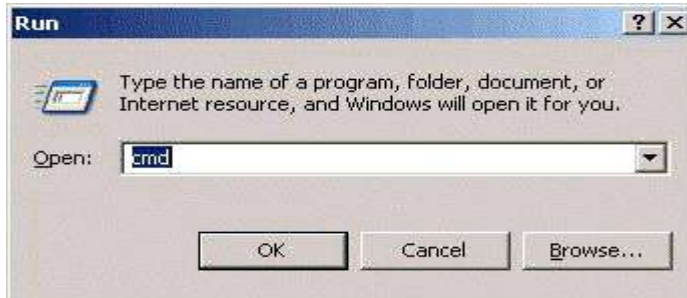


Determining Your MAC Address in Windows XP

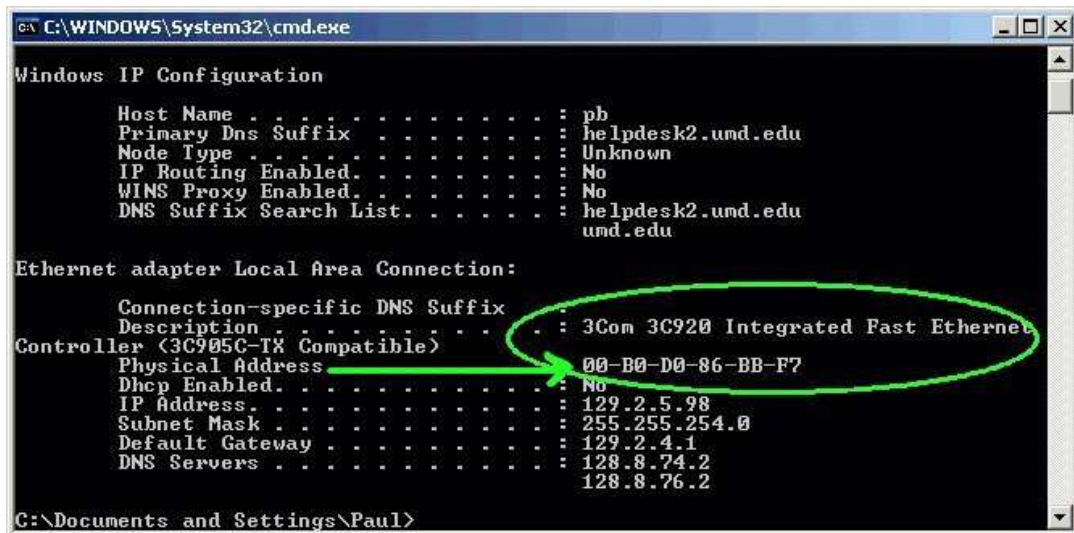
1. Click **Start** then choose **Run**.
2. Type `cmd` into the **Open:** field and press the Enter key.



3. Type `ipconfig /all` at the prompt and press the Enter key. (**Note:** there is a space between `ipconfig` and the slash.)



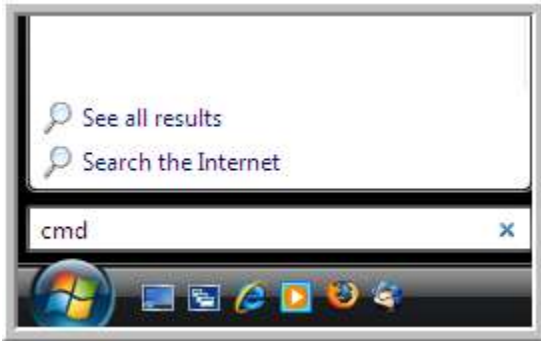
4. Locate your ethernet adapter description. Under description, you will see the category labeled **Physical Address**..... This is your **MAC** address that you will use when the registration page prompts you for it.
 - o The MAC address is alphanumeric and consists of 12 characters.
 - o Example: **00-B0-D0-86-BB-F7**



Ethernet adapter Local Area Connection **not** Wireless Connection

Determining Your MAC Address in Windows Vista

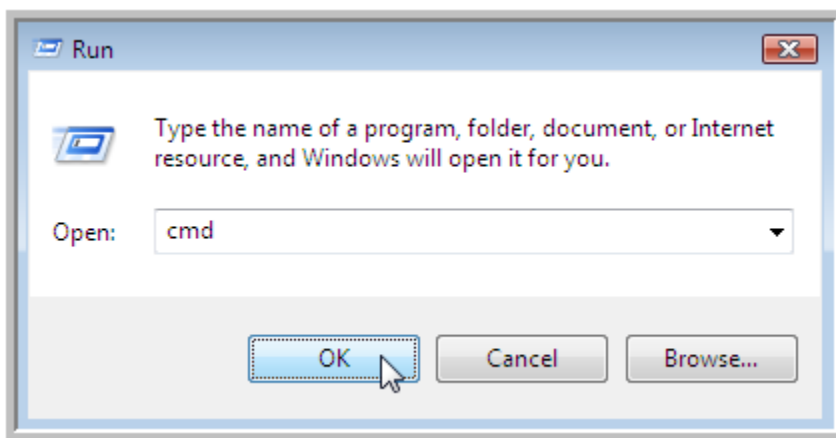
1. Click the Windows Start button and type **cmd** in the Start Search field, then hit **enter** to open the command prompt.



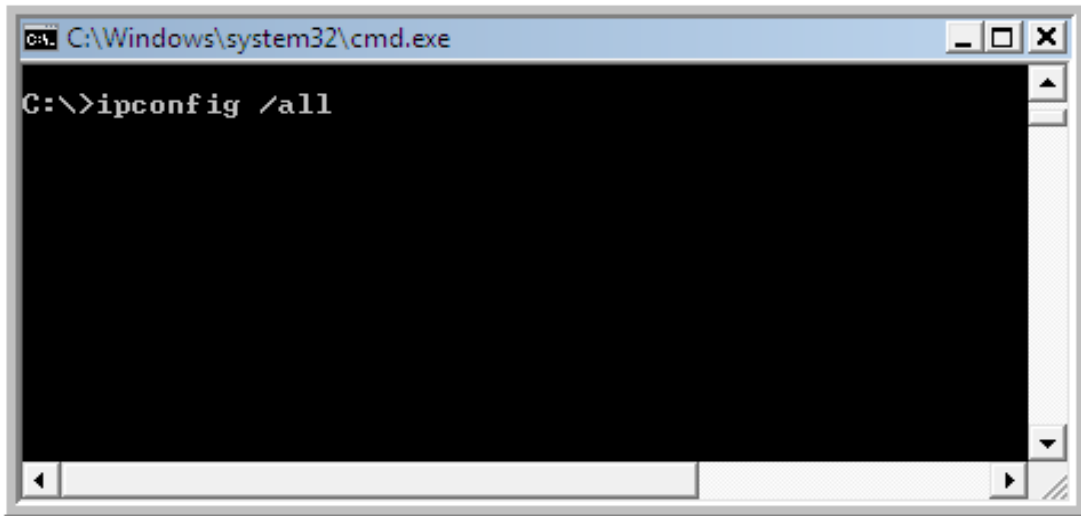
- o If using the Classic Start Menu: Click the **Run** button in the Windows **Start Menu**.



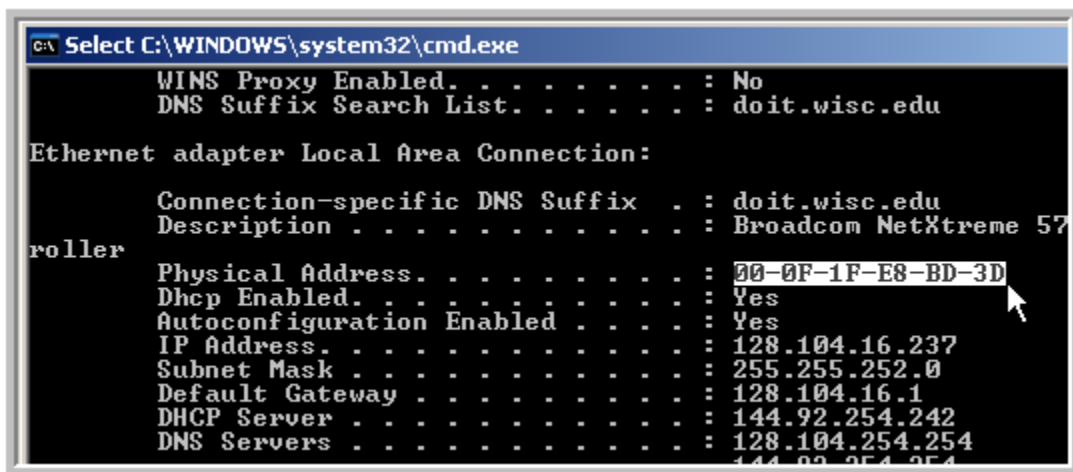
2. Type **cmd** in the **Open** prompt of the Run menu and click **OK** to launch a command prompt window.



3. Type **ipconfig /all** at the command prompt to check the network card settings.



4. The MAC address is listed by ipconfig under **Physical Address**.



Ethernet adapter Local Area Connection not Wireless Connection

Determining Your MAC Address in MAC OSx

Open System Preferences

Click on the Blue Apple Logo (🍏) in the upper right hand corner of the screen
System Preferences.

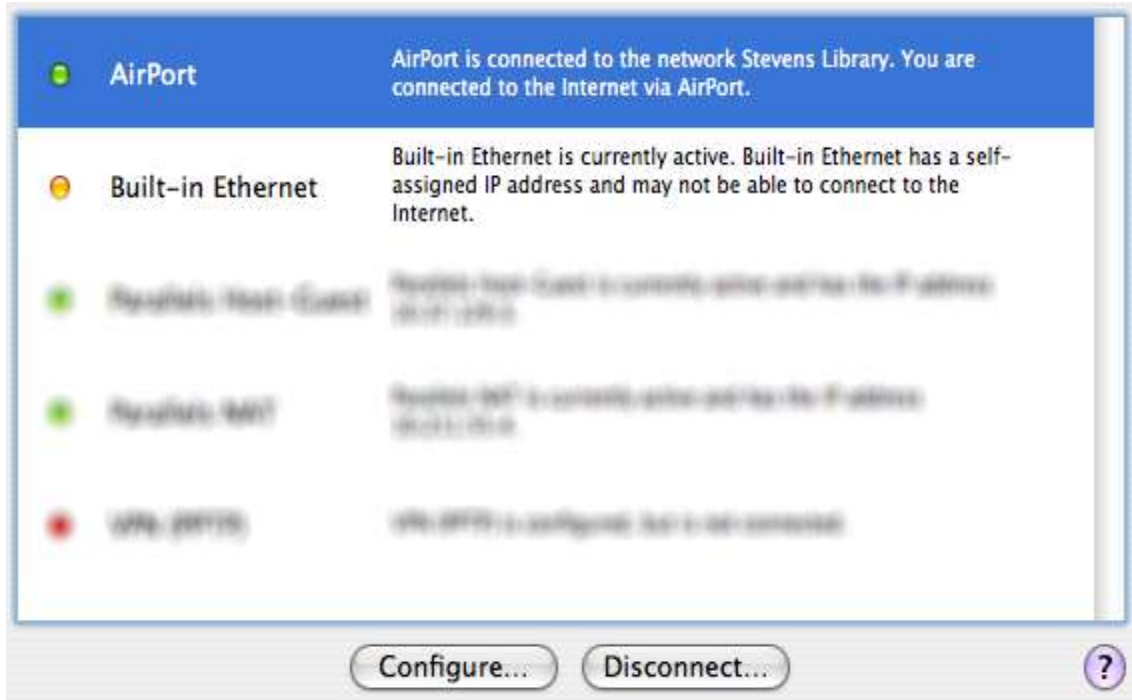


Select Network While in **System Preferences** select the **Network** icon.



Select Device

In the window that appears, highlight the device you wish to find the physical address for (**Select Built-in Ethernet**) and click **Configure**.

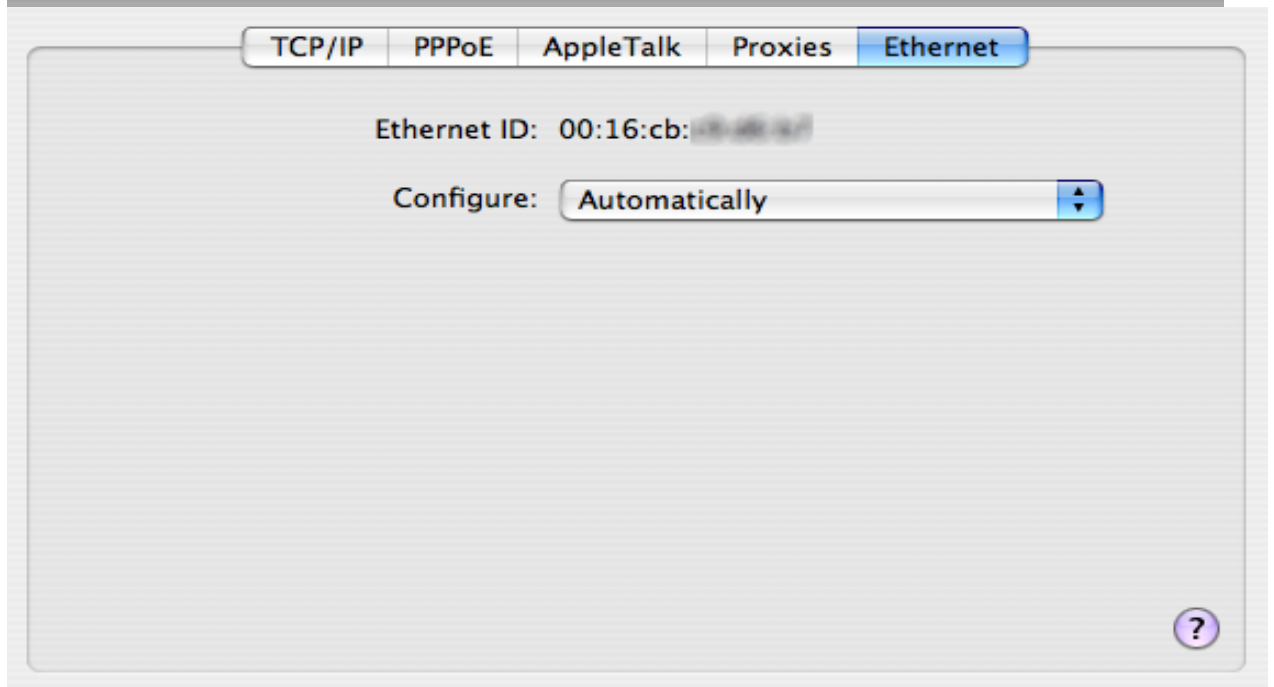
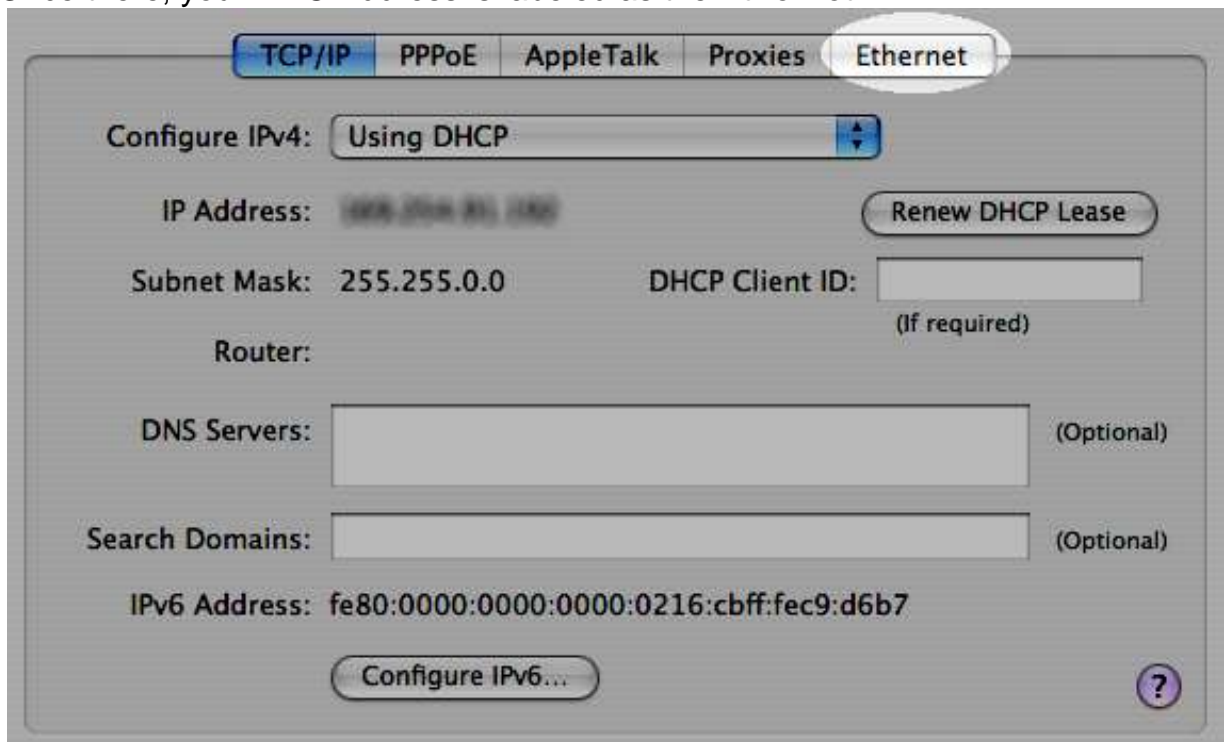


Wired

1. To locate your **Wired** MAC address, click the **Ethernet** tab

Continue to next page

2. Once there, your MAC Address is labeled as the **Ethernet ID**.



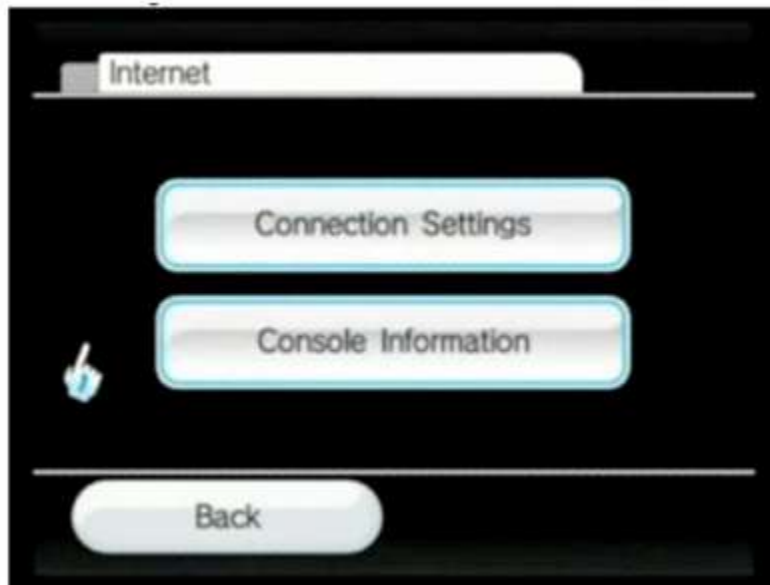
Determining Your MAC Address for Gaming Systems

Nintendo Wii (*LAN Adapter* required for in room connectivity)

1. Start Wii system without a disc
2. From the home screen, select the **Wii** button in the lower left hand corner.
3. Click on **Wii Settings**.



4. On this screen, select the right arrow to advance to the 2nd set of settings.
5. Select the **Internet** option.
6. Select the **Console Information** option.



7. The MAC address will be listed under **USB Ethernet Adapter MAC Address**.

Microsoft Xbox

1. Turn on your Xbox console with no game disc in the disc tray.
2. From the **Xbox Dashboard**, choose **Xbox Live**.
These steps assume you cannot connect to Xbox Live until you finish configuring your Xbox console to use your PC's MAC address. Therefore, you should receive the following message: "Could not connect to Xbox Live. Do you want to troubleshoot your network connection?".
3. From the **Connect Status** screen, select **Settings**.
4. The 12-digit number at the bottom-right corner of the **Network Settings** screens is the MAC address of your Xbox console. Do not change your Xbox console MAC address; just write it down so that you can use it later.

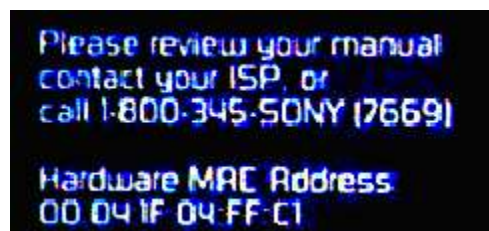


Microsoft Xbox 360

1. Go to the System area of the Xbox Dashboard and select **Network Settings**.
2. Select **Edit Settings**.
3. Under **Basic Settings**, check to make sure the **IP Settings** is on **Automatic**.
4. Now go to **Additional Settings**, select **Advanced Settings**.
5. At the bottom of this screen you'll see a heading called **Wired MAC Address**.

Sony PS2

1. Load the Start-up CD in your PS2.
2. Make sure you have the network cable disconnected.
3. Walk through the Start-Up CD until it starts testing your connection. Since we disconnected the network cable the test will fail.
4. You can now press the **select** button which will display the MAC.
5. The 12-digit number is the MAC address of your PS2, write it down so that you can use it later.



Sony PS 3

1. Power up the PlayStation 3 without any disc in the drive.
2. Once the PlayStation 3 operating system has loaded, select **Settings**.
3. Once you are in **Settings** select **Network Settings**.
4. When the **Network Settings** list appears, select the first option which is titled **Settings and Connection Status List**.
5. The physical address will be listed under **MAC Address**.