

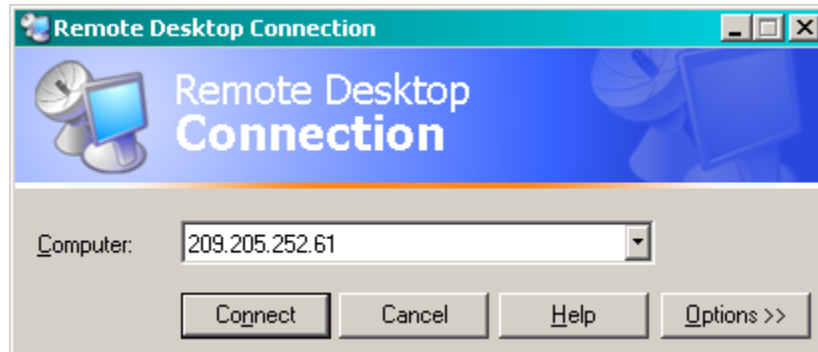
Connecting to your work PC from home

Make sure you contact the Help Desk to have your PC configured to accept your Remote PC request.

Windows Vista instructions are on page 2.

On your home PC (WINDOWS XP):

1. Click on **Start | Programs | Accessories | Communications | Remote Desktop Connection**
2. In the **Remote Desktop Connection** window, type your **IP address** (given to you by the Help Desk Tech), and click on **Connect**.

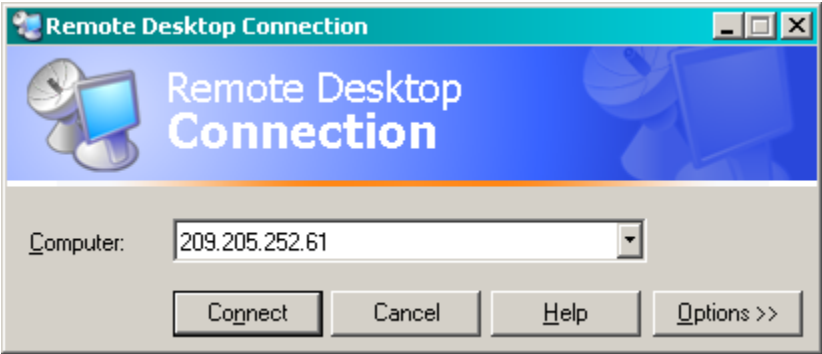


3. You will see the SWGC welcome screen - Click on OK
4. Login to the computer as if you were at the office, using your regular computing userid and **password**.

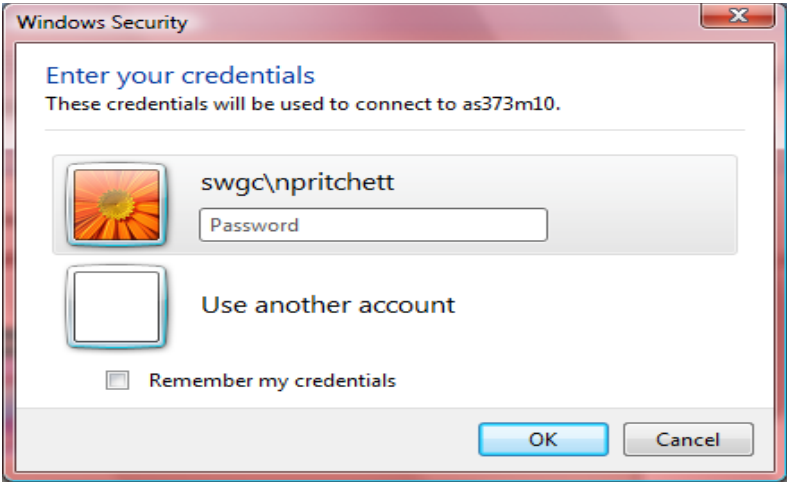


On your home PC (WINDOWS VISTA):

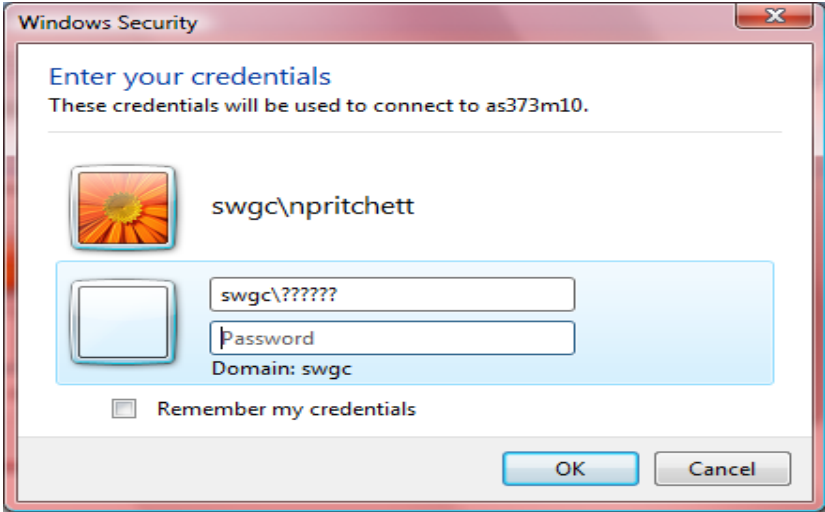
- 1. Click on **Start | All Programs | Accessories | Remote Desktop Connection**
- 2. In the **Remote Desktop Connection** window, type your office pc **IP address** (given to you by the Help Desk Tech), and click on **Connect**.



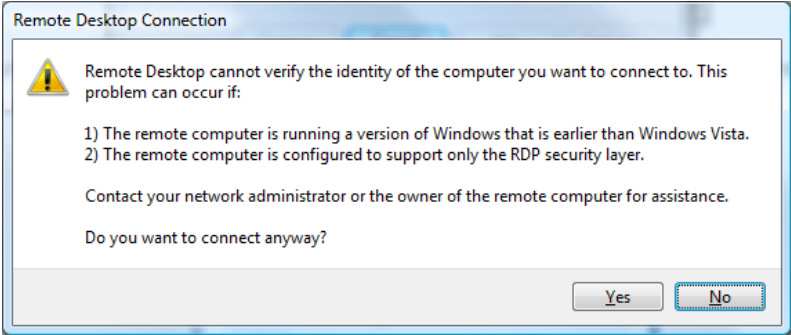
- 3. You will be prompted with a Windows Security dialog box. Click "Use Other Account".



4. Enter your username as: swgc\username and then your password. Click “OK”



5. You will be prompted with a Remote Desktop Connection dialog box. Click Yes.



6. You will see the SWGC welcome screen - Click on OK. You will be automatically logged on.