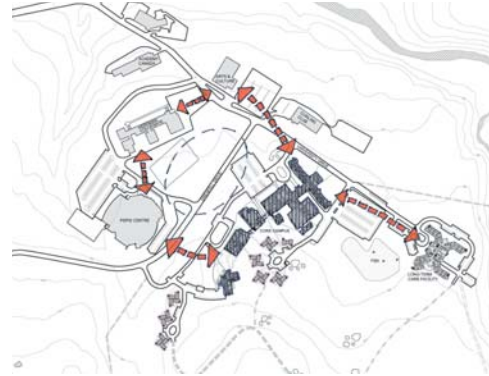


OPPORTUNITIES - New Buildings & Additions

THE SITE



A compact core on the edge of a pristine natural environment and magnificent views to the northwest.



The Core Campus is linked to a larger connection of compatible uses. Campus services, including athletics and parking, are available within a five-minute walk.

CAMPUS GROWTH PRINCIPLES

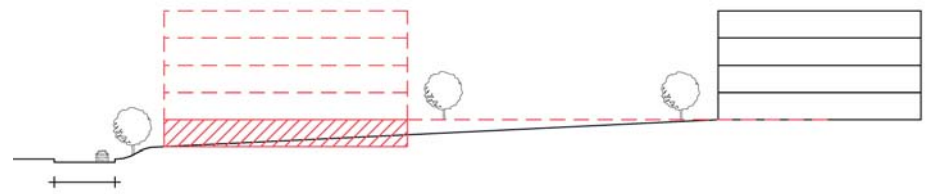
Based on the key site characteristics shown at left, campus growth should occur in the following fashion:

- The Core Campus should be intensified to minimize walking distances and reduce infrastructure costs
- Buildings should frame views and create an attractive edge to the campus.
- All edges of buildings should look onto attractive outdoor spaces
- Tall building elements should create visual anchors.
- Building edges should be linked with breeze-ways or enclosed building connections at the ground floor level.

3D MODEL VIEW OF THE CONCEPT



Model view of the proposed Campus seen from the north.



Building C and D proposed south of the Arts and Administration Building take advantage of the slope by integrating underground parking without significant excavation.

THE PROPOSED CONCEPT IN DETAILS

BUILDINGS C & D

3-5 storey landmark academic buildings on the ridge take advantage of the views and accommodate parking within the slope.

PARKING GARAGE E

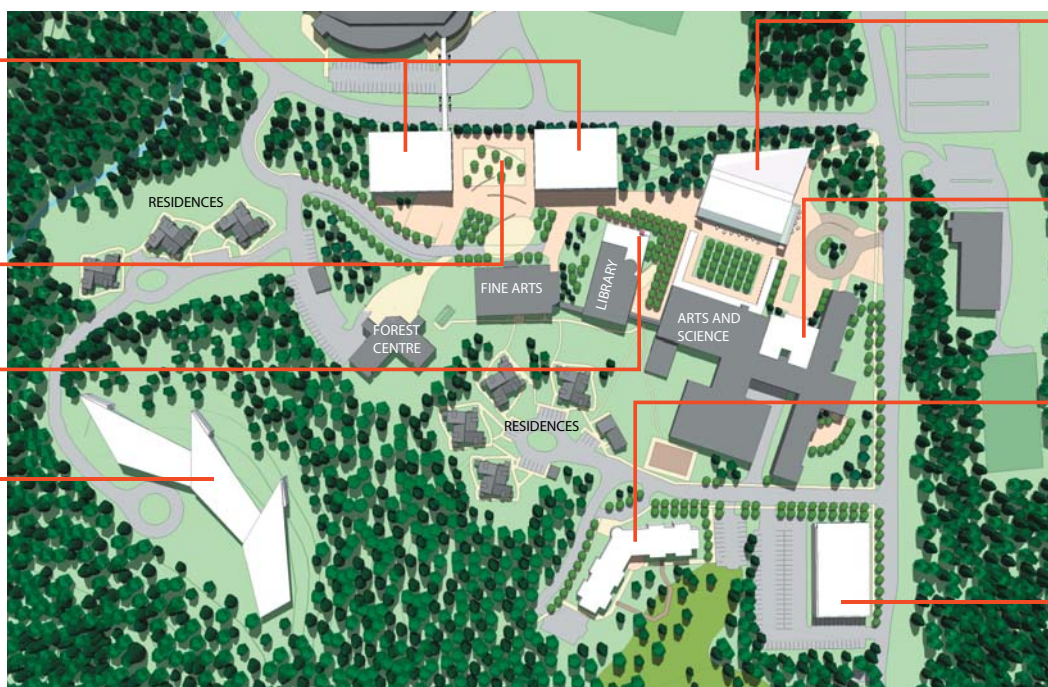
A one-level parking facility integrated in the slope with a landscape open space as roof.

BUILDING G

A 3-storey library infill addition designed to improve the image and entry to the Library and increase its capacity.

BUILDING I

A prominent 3-4 storey hilltop building with academic, residential and research potential. A longer-term opportunity, with potential phasing.



BUILDING A

A prominent 3-4 storey gateway building with opportunity for a new Campus Common integrating common, assembly and exhibition space. This building is linked to the rest of the Campus by colonnades.

BUILDING H

A 3-storey Arts and Sciences infill structure designed to take advantage of an underutilized space and create a common space for Arts and Science. The ground floor would include an improved entry and a student lounge combined with a transit waiting area.

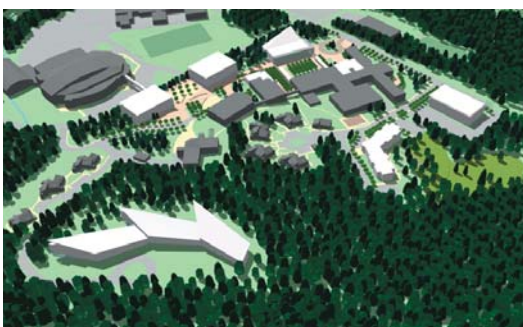
BUILDING F

A 3-4 storey, 250 to 330-bed residence in a quiet area of the Campus near the Fen and close to other campus buildings and residences. Opportunities for a variety of residents, some of whom may be visiting or working at the Long Term Care Facility.

BUILDING B

A 3-4 storey academic building with opportunities for synergies with the Long Term Care Facility (e.g. Nursing or other Health Care).

ADDITIONAL VIEWS



Model view of the Campus seen from the south.



Model view of the Campus seen from the west.



Model view of the Campus seen from the north.

SIR WILFRED GRENFELL COLLEGE
CORNER BROOK CAMPUS OF MEMORIAL UNIVERSITY OF NEWFOUNDLAND

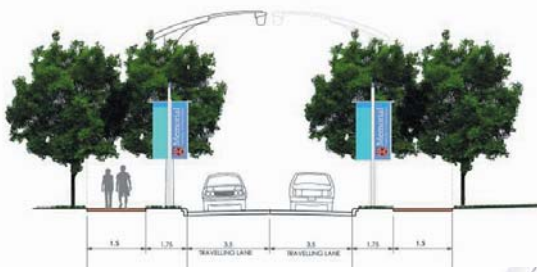
Campus Landscape

LANDSCAPE DESIGN PRINCIPLES

1. Provide excitement and interest in the landscapes in all seasons of the year, particularly in the winter months.



2. Provide accessible pedestrian linkages and connections that are usable in all seasons of the year.



3. Ensure that physical placement and dimensioning of landscape elements respect snow storage and removal requirements.

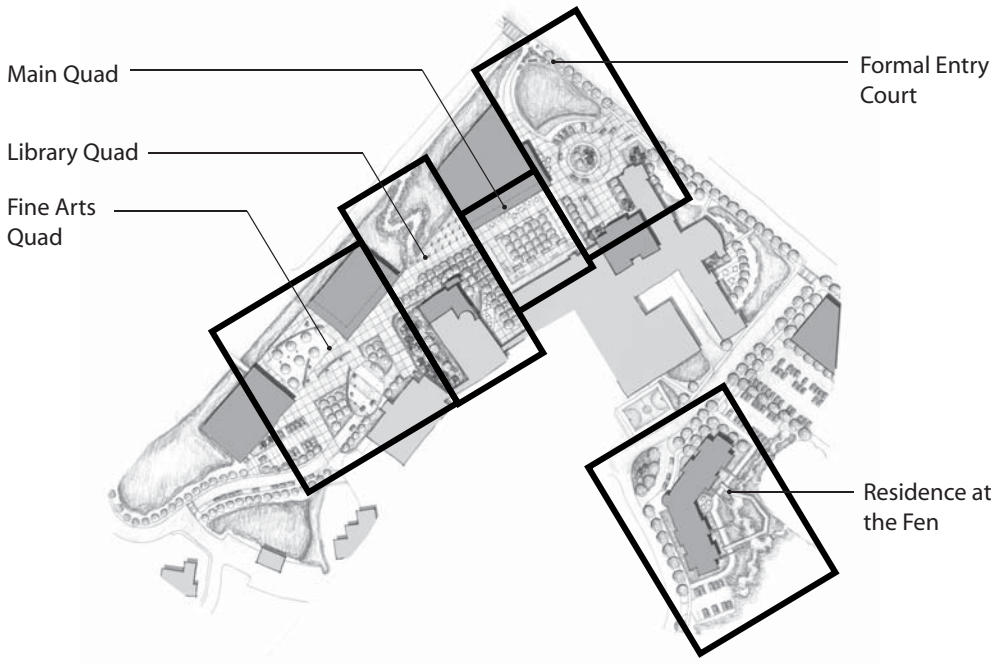
4. Enhance the campus garden-like landscape by integrating the natural setting, using natural materials and incorporating a consistent palette of materials.



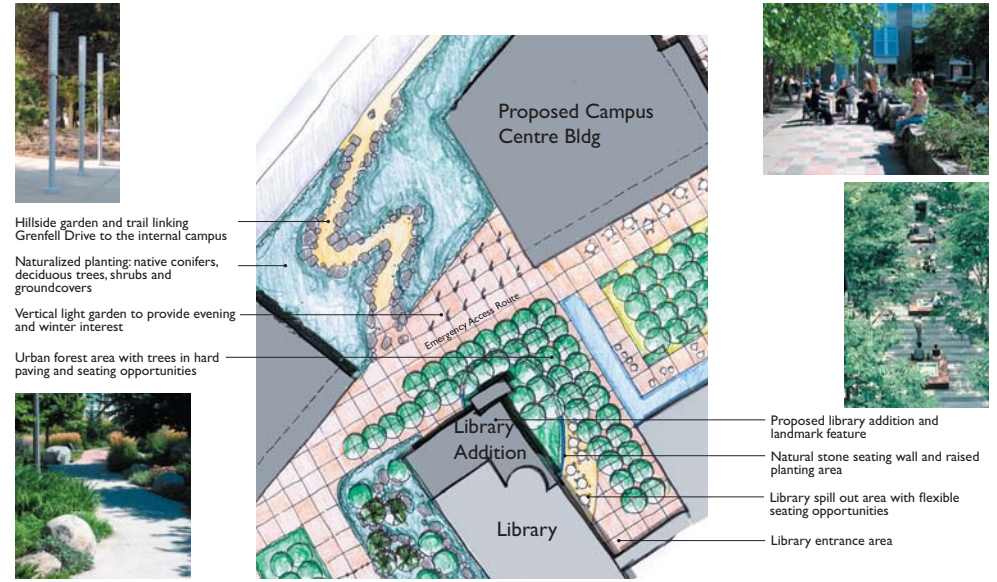
SIR WILFRED GRENFELL COLLEGE CORNER BROOK CAMPUS OF MEMORIAL UNIVERSITY OF NEWFOUNDLAND

Campus Landscape

Key Plan

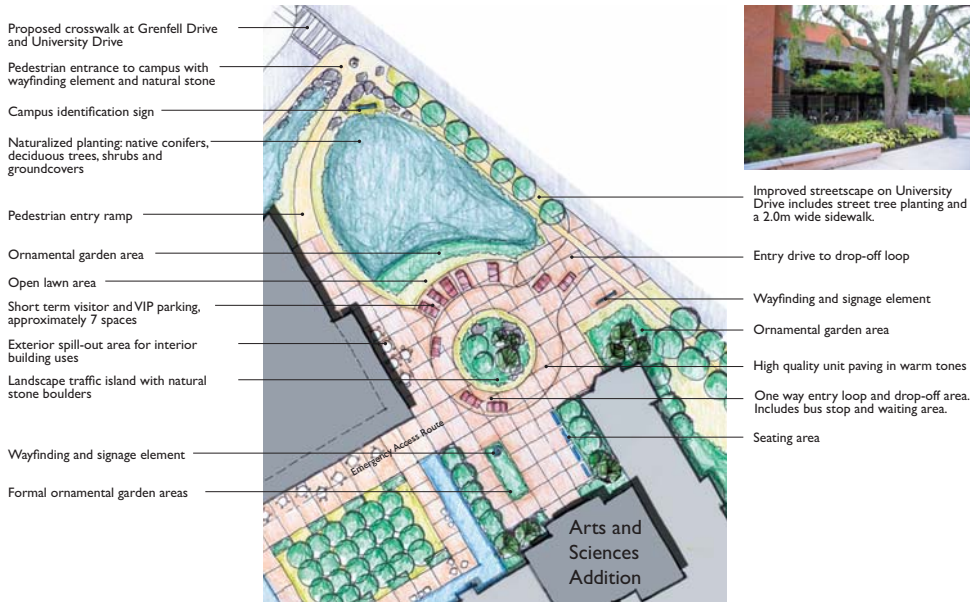


Library Quad



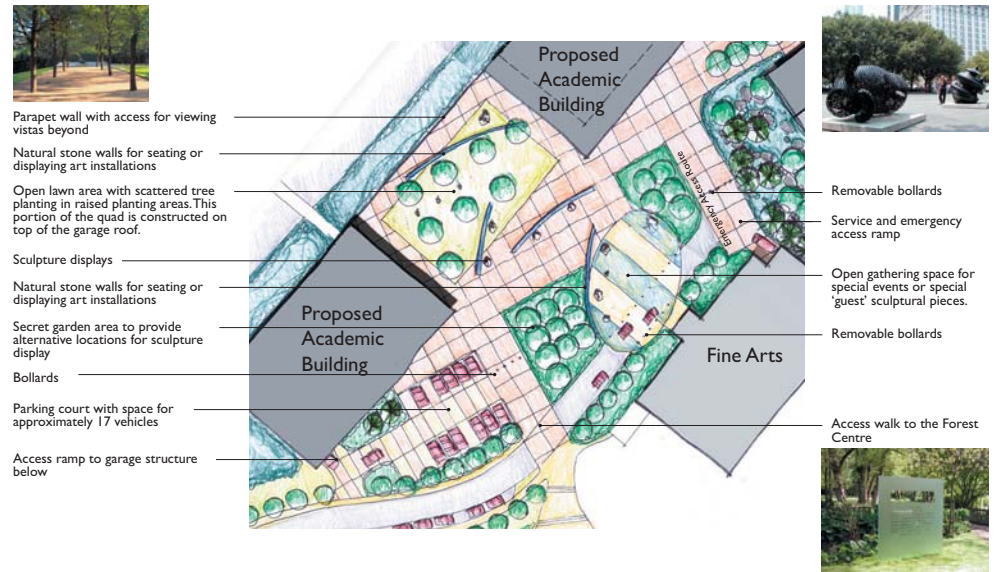
The Library Quad provides a visual base to the library extension and landmark feature while visually linking the building to Grenfell Drive. Physically, the Quad provides locations for seating and meeting while creating patterns in the landscape that will provide visual interest in the winter months.

Formal Entry Court



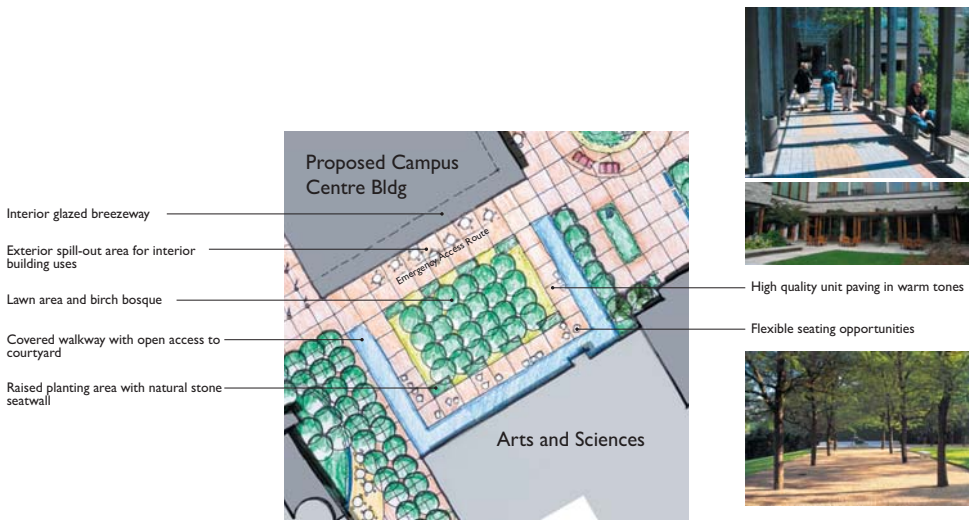
The Formal Entry Court will provide a new, organized entrance and drop off area that will promote the improved image for the campus. More emphasis will be placed on providing amenity and comfort for pedestrians.

Fine Arts Quad



The Fine Arts Quad will provide a dynamic forecourt to the Fine Arts building that will celebrate the significance of the Fine Arts program at the college and the excellent history of the artisan community of Newfoundland. The landscape will provide diverse opportunities for art installations by both students and professional artists and will feature permanent displays as well as 'guest' pieces.

Main Quad



Enclosed by a glazed breezeway and covered walkways, the Main Quad will provide students and staff with a semi-formal protected courtyard in which to study, relax or meet with friends. The design should be simple yet visually powerful and provide some opportunities for public art.

Residence at the Fen



The proposed residence building landscaping will provide an interesting and educational landscape while being sensitive to the proximity and function of the Fen. The landscape will include amenity areas for the building residents.